

PLA1A Antibody

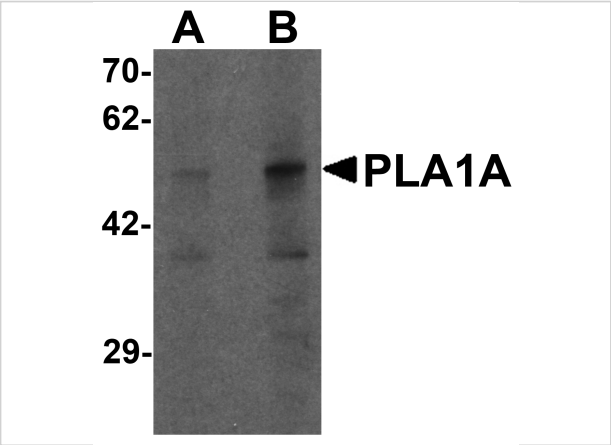
CATALOG NUMBER: 7059

Specifications

Host Species	Rabbit
Species Reactivity	Human, Rat
Homology	Predicted species reactivity based on immunogen sequence: Mouse: (75%), Bovine: (71%)
Immunogen	PLA1A antibody was raised against a 17 amino acid synthetic peptide near the carboxy terminus of human PLA1A. The immunogen is located within amino acids 380 - 430 of PLA1A.
Conjugate	Unconjugated
Tested Applications	ELISA, IF, WB
User Note	Optimal dilutions for each application to be determined by the researcher.
Specificity	At least three isoforms of PLA1A are known to exist; this antibody will detect all three isoforms.
Predicted Molecular Weight	50 kDa

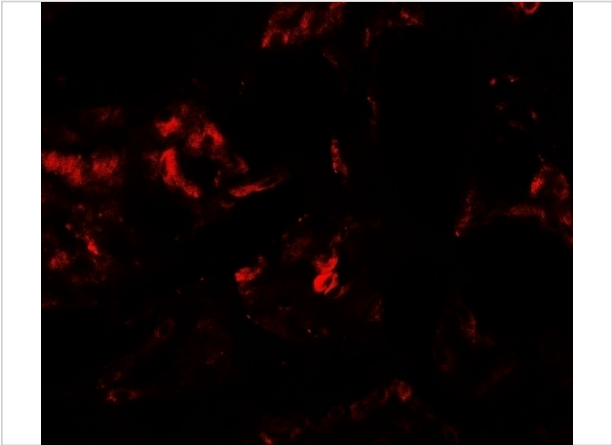
Properties

Purification	PLA1A Antibody is affinity chromatography purified via peptide column.
Clonality	Polyclonal
Isotype	IgG
Physical State	Liquid
Buffer	PLA1A Antibody is supplied in PBS containing 0.02% sodium azide.
Concentration	1 mg/mL
Storage Conditions	PLA1A antibody can be stored at 4°C for three months and -20°C, stable for up to one year. As with all antibodies care should be taken to avoid repeated freeze thaw cycles. Antibodies should not be exposed to prolonged high temperatures.



PLA1A Antibody 1

Western blot analysis of PLA1A in human kidney tissue lysate with PLA1A antibody at (A) 1 and (B) 2 $\mu\text{g/mL}$.



PLA1A Antibody 2

Immunofluorescence of PLA1A in human kidney tissue with PLA1A antibody at 20 $\mu\text{g/mL}$.

Disclaimer

Disclaimer	Optimal dilutions/concentrations should be determined by the end user. The information provided is a guideline for product use. This product is for research use only.
------------	--

For research use only. For additional information, visit ProSci's [Terms and Conditions Page](#).