

SGSM3 Antibody

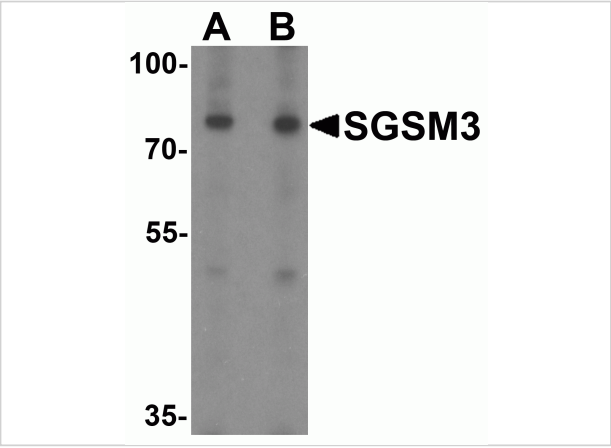
CATALOG NUMBER: 7037

Specifications

Host Species	Rabbit
Species Reactivity	Human
Homology	Predicted species reactivity based on immunogen sequence: Rat: (82%), Mouse: (82%), Bovine: (79%)
Immunogen	SGSM3 antibody was raised against an 18 amino acid synthetic peptide near the amino terminus of human SGSM3. The immunogen is located within amino acids 30 - 80 of SGSM3.
Conjugate	Unconjugated
Tested Applications	ELISA, IF, WB
User Note	Optimal dilutions for each application to be determined by the researcher.
Specificity	Multiple isoforms of SGSM3 are known to exist. SGSM3 antibody is predicted to not cross react with other SGSM family proteins.
Predicted Molecular Weight	82 kDa

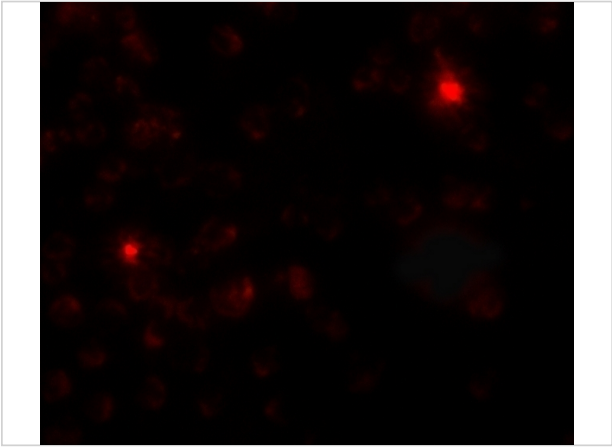
Properties

Purification	SGSM3 Antibody is affinity chromatography purified via peptide column.
Clonality	Polyclonal
Isotype	IgG
Physical State	Liquid
Buffer	SGSM3 Antibody is supplied in PBS containing 0.02% sodium azide.
Concentration	1 mg/mL
Storage Conditions	SGSM3 antibody can be stored at 4°C for three months and -20°C, stable for up to one year. As with all antibodies care should be taken to avoid repeated freeze thaw cycles. Antibodies should not be exposed to prolonged high temperatures.



SGSM3 Antibody 1

Western blot analysis of SGSM3 in 293 cell lysate with SGSM3 antibody at (A) 1 and (B) 2 µg/mL.



SGSM3 Antibody 2

Immunofluorescence of SGSM3 in 293 cells with SGSM3 antibody at 20 µg/mL.

Disclaimer

Disclaimer	Optimal dilutions/concentrations should be determined by the end user. The information provided is a guideline for product use. This product is for research use only.
------------	--

For research use only. For additional information, visit ProSci's [Terms and Conditions Page](#).