

IL-31 Antibody

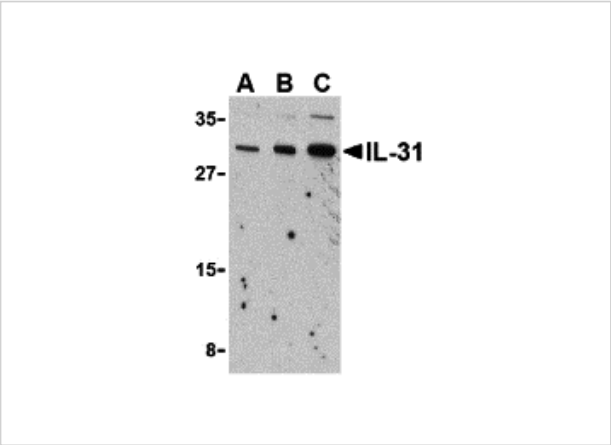
CATALOG NUMBER: 3745

Specifications

Host Species	Rabbit
Species Reactivity	Mouse
Immunogen	IL-31 antibody was raised against a 16 amino acid synthetic peptide from near the amino terminus of mouse IL-31. The immunogen is located within amino acids 30 - 80 of IL-31.
Conjugate	Unconjugated
Tested Applications	ELISA, IHC-P, WB
User Note	Optimal dilutions for each application to be determined by the researcher.

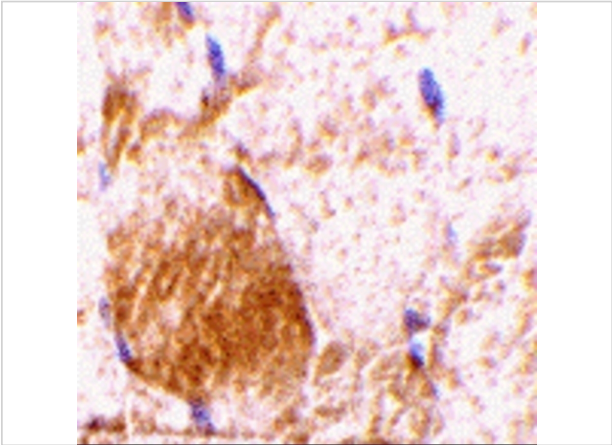
Properties

Purification	IL-31 Antibody is affinity chromatography purified via peptide column.
Clonality	Polyclonal
Isotype	IgG
Physical State	Liquid
Buffer	IL-31 Antibody is supplied in PBS containing 0.02% sodium azide.
Concentration	1 mg/mL
Storage Conditions	IL-31 antibody can be stored at 4°C for three months and -20°C, stable for up to one year. As with all antibodies care should be taken to avoid repeated freeze thaw cycles. Antibodies should not be exposed to prolonged high temperatures.



IL-31 Antibody 1

Western blot analysis of IL-31 in RAW264.7 cell lysate with IL-31 antibody at (A) 2.5, (B) 5 and (C) 10 µg/mL.



IL-31 Antibody 2

Immunohistochemistry of IL-31 in rat skeletal muscle tissue with IL-31 antibody at 10 µg/mL.

Disclaimer

Disclaimer	Optimal dilutions/concentrations should be determined by the end user. The information provided is a guideline for product use. This product is for research use only.
------------	--

For research use only. For additional information, visit ProSci's [Terms and Conditions Page](#).