

## SGSM1 Antibody

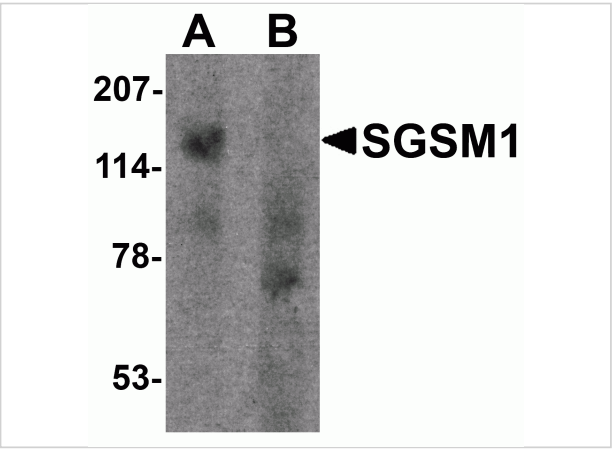
CATALOG NUMBER: 7033

### Specifications

<b>Host Species</b>	Rabbit
<b>Species Reactivity</b>	Human, Mouse, Rat
<b>Immunogen</b>	SGSM1 antibody was raised against a 17 amino acid synthetic peptide near the center of human SGSM1. The immunogen is located within amino acids 480 - 530 of SGSM1.
<b>Conjugate</b>	Unconjugated
<b>Tested Applications</b>	ELISA, IF, WB
<b>User Note</b>	Optimal dilutions for each application to be determined by the researcher.
<b>Specificity</b>	At least four isoforms of SGSM1 are known to exist; SGSM1 antibody will detect all four isoforms.
<b>Predicted Molecular Weight</b>	126 kDa

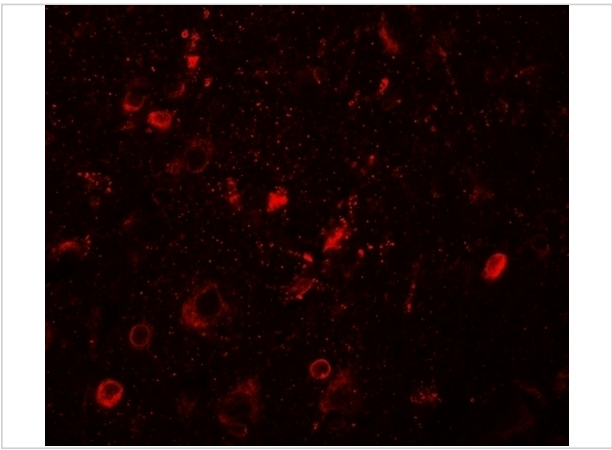
### Properties

<b>Purification</b>	SGSM1 Antibody is affinity chromatography purified via peptide column.
<b>Clonality</b>	Polyclonal
<b>Isotype</b>	IgG
<b>Physical State</b>	Liquid
<b>Buffer</b>	SGSM1 Antibody is supplied in PBS containing 0.02% sodium azide.
<b>Concentration</b>	1 mg/mL
<b>Storage Conditions</b>	SGSM1 antibody can be stored at 4°C for three months and -20°C, stable for up to one year. As with all antibodies care should be taken to avoid repeated freeze thaw cycles. Antibodies should not be exposed to prolonged high temperatures.



SGSM1 Antibody 1

Western blot analysis of SGSM1 in human cerebellum tissue lysate with SGSM1 antibody at 1 µg/ml in (A) the absence and (B) the presence of blocking peptide.



SGSM1 Antibody 2

Immunofluorescence of SGSM1 in human brain tissue with SGSM1 antibody at 20 µg/mL.

Disclaimer

Disclaimer	Optimal dilutions/concentrations should be determined by the end user. The information provided is a guideline for product use. This product is for research use only.
------------	--

For research use only. For additional information, visit ProSci's [Terms and Conditions Page](#).