

CLAUDIN4 Antibody

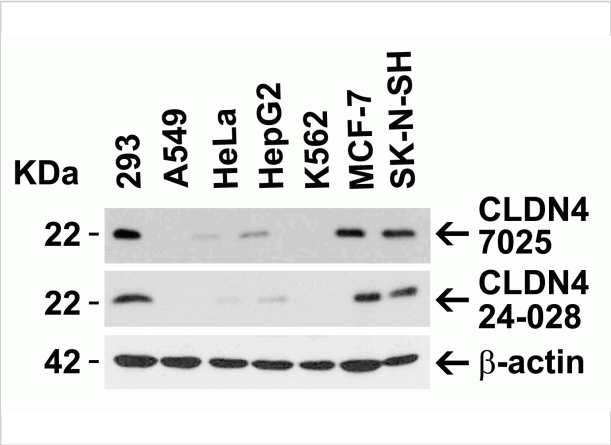
CATALOG NUMBER: 7025

Specifications

Host Species	Rabbit
Species Reactivity	Human
Homology	Predicted species reactivity based on immunogen sequence: Bovine: (94%), Mouse (94%) and Rat (88%).
Immunogen	Anti-CLAUDIN4 antibody (7025) was raised against a peptide corresponding to 17 amino acids near the carboxy terminus of human CLAUDIN4. The immunogen is located within the last 50 amino acids of CLAUDIN4.
Conjugate	Unconjugated
Tested Applications	ELISA, IF, WB
User Note	Optimal dilutions for each application to be determined by the researcher.
Specificity	At least four isoforms of CLAUDIN4 are known to exist; CLAUDIN4 antibody will detect all four isoforms
Predicted Molecular Weight	Predicted: 22kD Observed: 22 kD

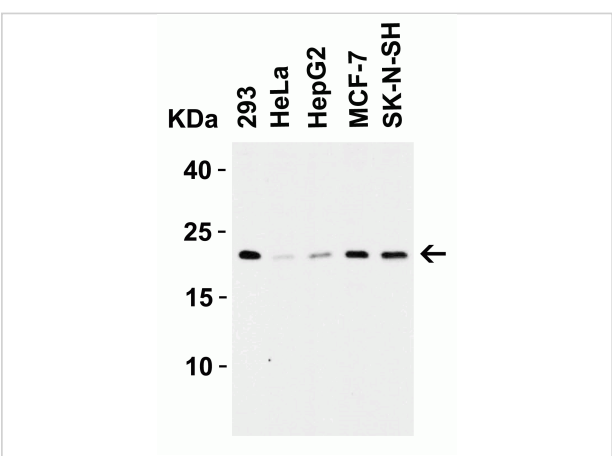
Properties

Purification	CLAUDIN4 Antibody is affinity chromatography purified via peptide column.
Clonality	Polyclonal
Isotype	IgG
Physical State	Liquid
Buffer	CLAUDIN4 Antibody is supplied in PBS containing 0.02% sodium azide.
Concentration	1 mg/mL
Storage Conditions	CLAUDIN4 antibody can be stored at 4°C for three months and -20°C, stable for up to one year. As with all antibodies care should be taken to avoid repeated freeze thaw cycles. Antibodies should not be exposed to prolonged high temperatures.



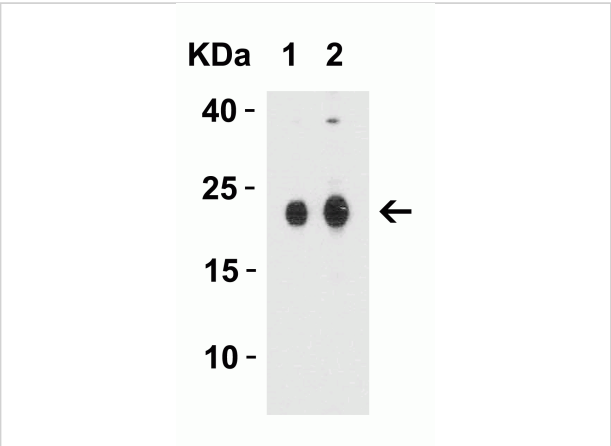
CLAUDIN4 Antibody 1

Figure 1 Independent Antibody Validation (IAV) via Protein Expression Profile in Human Cell Lines
Loading: 15 μ g of lysates per lane. Antibodies: CLAUDIN4, 7025 (1 μ g/mL), CLAUDI...



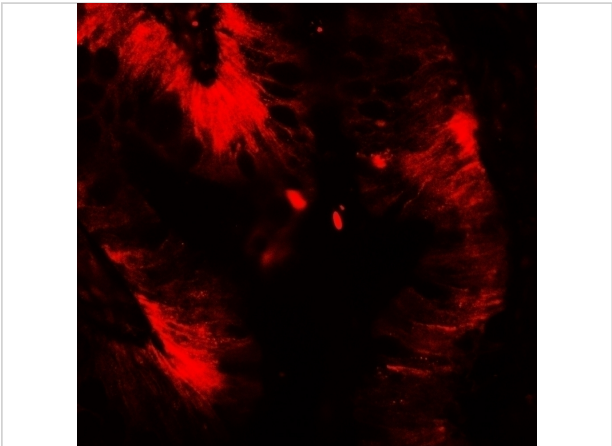
CLAUDIN4 Antibody 2

Figure 2 Western Blot Validation in Human Cell Lines
Loading: 15 μ g of lysates per lane. Antibodies: CLAUDIN4, 7025 (1 μ g/mL), 1h incubation at RT in 5% NFDm/TBST. Secondary: Goat...



CLAUDIN4 Antibody 3

Figure 3 Western Blot Validation in Human Colon Tissue Lysate
Loading: 15 μ g of lysates per lane. Antibodies: CLAUDIN4, 7025 (Lane 1: 1 μ g/mL and Lane 2: 2 μ g/mL), 1h incubation ...



CLAUDIN4 Antibody 4

Figure 3 Western Blot Validation in Human Colon Tissue Lysate
Loading: 15 μ g of lysates per lane. Antibodies: CLAUDIN4, 7025 (Lane 1: 1 μ g/mL and Lane 2: 2 μ g/mL), 1h incubation ...

Disclaimer

Disclaimer	Optimal dilutions/concentrations should be determined by the end user. The information provided is a guideline for product use. This product is for research use only.
------------	--

For research use only. For additional information, visit ProSci's [Terms and Conditions Page](#).