

## EPM2A Antibody

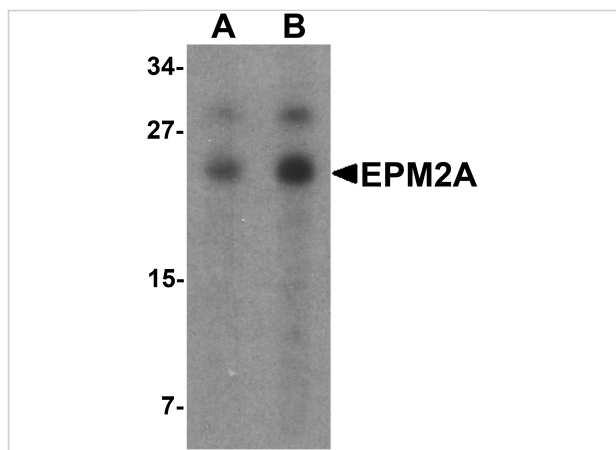
CATALOG NUMBER: 7023

### Specifications

Host Species	Rabbit
Species Reactivity	Human, Mouse, Rat
Immunogen	EPM2A antibody was raised against a 17 amino acid synthetic peptide near the carboxy terminus of human EPM2A. The immunogen is located within amino acids 190 - 240 of EPM2A.
Conjugate	Unconjugated
Tested Applications	ELISA, ICC, IF, WB
User Note	Optimal dilutions for each application to be determined by the researcher.
Specificity	At least four isoforms of EPM2A are known to exist; this antibody will detect all but the shortest isoform.
Predicted Molecular Weight	36 kDa

### Properties

Purification	EPM2A Antibody is affinity chromatography purified via peptide column.
Clonality	Polyclonal
Isotype	IgG
Physical State	Liquid
Buffer	EPM2A Antibody is supplied in PBS containing 0.02% sodium azide.
Concentration	1 mg/mL
Storage Conditions	EPM2A antibody can be stored at 4°C for three months and -20°C, stable for up to one year. As with all antibodies care should be taken to avoid repeated freeze thaw cycles. Antibodies should not be exposed to prolonged high temperatures.



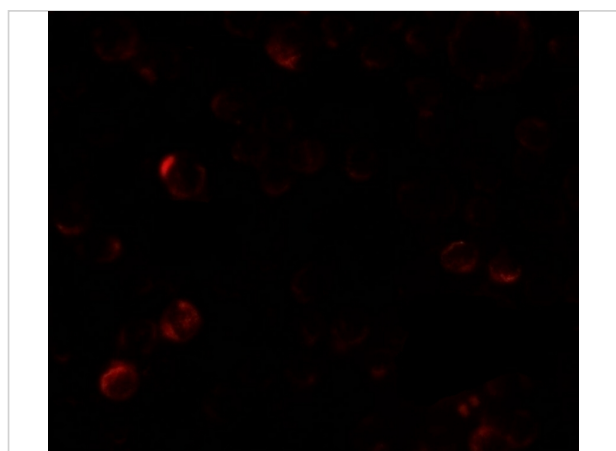
### EPM2A Antibody 1

Western blot analysis of SW480 in SW480 cell lysate with EPM2A antibody at (A) 1 and (B) 2 µg/mL.



### EPM2A Antibody 2

Immunocytochemistry of EPM2A in SW480 cells with EPM2A antibody at 2.5 µg/mL.



### EPM2A Antibody 3

Immunofluorescence of EPM2A in SW480 cells with EPM2A antibody at 5 µg/mL.

## Disclaimer

#### Disclaimer

Optimal dilutions/concentrations should be determined by the end user. The information provided is a guideline for product use. This product is for research use only.

For research use only. For additional information, visit ProSci's [Terms and Conditions Page](#).