

## DLK1 Antibody

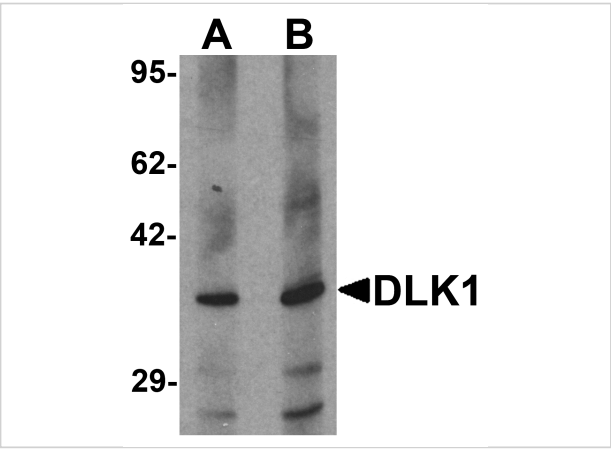
CATALOG NUMBER: 7017

### Specifications

Host Species	Rabbit
Species Reactivity	Human, Mouse, Rat
Immunogen	DLK1 antibody was raised against an 18 amino acid synthetic peptide near the carboxy terminus of human DLK1. The immunogen is located within amino acids 260 - 310 of DLK1.
Conjugate	Unconjugated
Tested Applications	ELISA, ICC, IF, WB
User Note	Optimal dilutions for each application to be determined by the researcher.
Specificity	At least four isoforms of DLK1 are known to exist.
Predicted Molecular Weight	42 kDa

### Properties

Purification	DLK1 Antibody is affinity chromatography purified via peptide column.
Clonality	Polyclonal
Isotype	IgG
Physical State	Liquid
Buffer	DLK1 Antibody is supplied in PBS containing 0.02% sodium azide.
Concentration	1 mg/mL
Storage Conditions	DLK1 antibody can be stored at 4°C for three months and -20°C, stable for up to one year. As with all antibodies care should be taken to avoid repeated freeze thaw cycles. Antibodies should not be exposed to prolonged high temperatures.



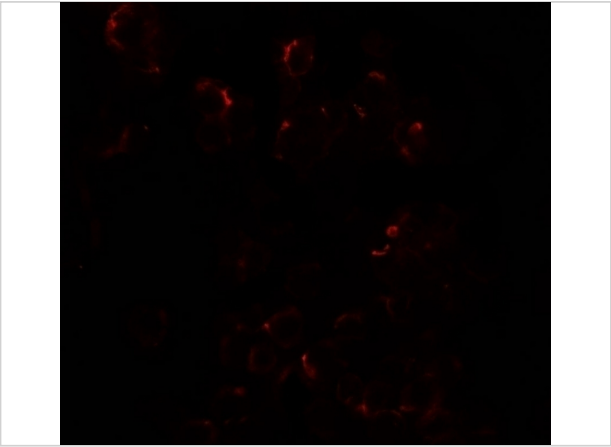
### DLK1 Antibody 1

Western blot analysis of HepG2 in 293 cell lysate with DLK1 antibody at (A) 1 and (B) 2 µg/mL.



### DLK1 Antibody 2

Immunocytochemistry of DLK1 in HepG2 cells with DLK1 antibody at 2.5 µg/mL.



### DLK1 Antibody 3

Immunofluorescence of DLK1 in HepG2 cells with DLK1 antibody at 20 µg/mL.

## Disclaimer

Disclaimer	Optimal dilutions/concentrations should be determined by the end user. The information provided is a guideline for product use. This product is for research use only.
------------	--

For research use only. For additional information, visit ProSci's [Terms and Conditions Page](#).