

## EED Antibody

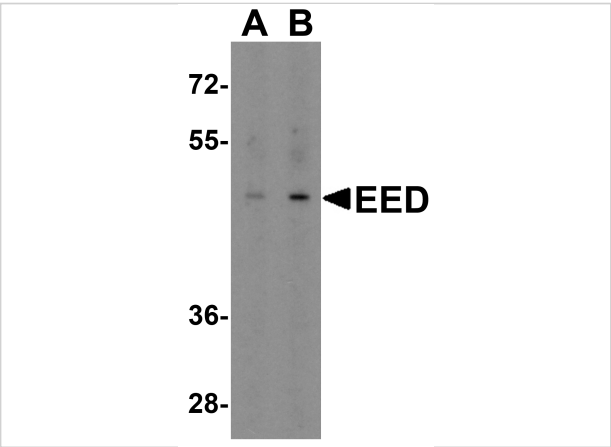
CATALOG NUMBER: 7009

### Specifications

Host Species	Rabbit
Species Reactivity	Human, Mouse, Rat
Homology	Predicted species reactivity based on immunogen sequence: Chicken: (100%), Bovine: (100%)
Immunogen	EED antibody was raised against an 18 amino acid synthetic peptide near the amino terminus of human EED. The immunogen is located within amino acids 30 - 80 of EED.
Conjugate	Unconjugated
Tested Applications	ELISA, IF, WB
User Note	Optimal dilutions for each application to be determined by the researcher.
Specificity	Four alternatively spliced transcript variants have been observed.
Predicted Molecular Weight	Predicted: 49 kDa Observed: 49 kDa

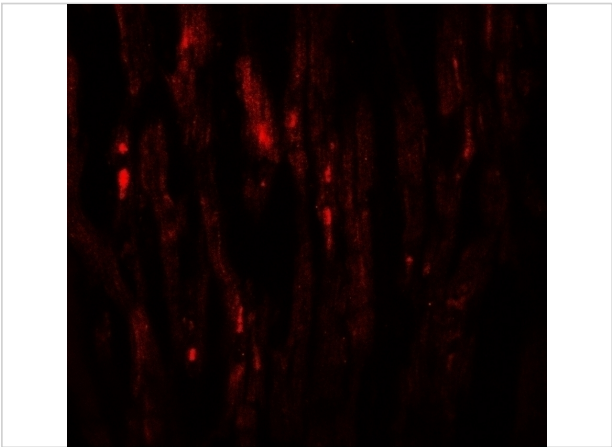
### Properties

Purification	EED Antibody is affinity chromatography purified via peptide column.
Clonality	Polyclonal
Isotype	IgG
Physical State	Liquid
Buffer	EED Antibody is supplied in PBS containing 0.02% sodium azide.
Concentration	1 mg/mL
Storage Conditions	EED antibody can be stored at 4°C for three months and -20°C, stable for up to one year. As with all antibodies care should be taken to avoid repeated freeze thaw cycles. Antibodies should not be exposed to prolonged high temperatures.



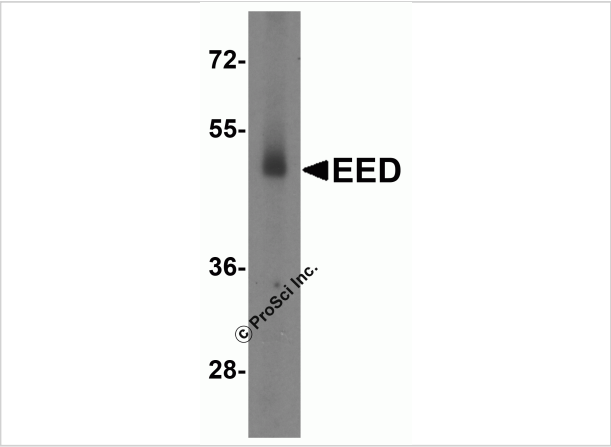
EED Antibody 1

Western blot analysis of EED in human heart tissue lysate with EED antibody at (A) 1 and (B) 2 µg/mL.



EED Antibody 2

Immunofluorescence of EED in human heart tissue with EED antibody at 20 µg/mL.



EED Antibody 3

Western blot analysis of EED expression in human testis tissue lysate with EED antibody at 2 µg/mL.

Disclaimer

Disclaimer	Optimal dilutions/concentrations should be determined by the end user. The information provided is a guideline for product use. This product is for research use only.
------------	--

For research use only. For additional information, visit ProSci's [Terms and Conditions Page](#).