

TLR9 Antibody

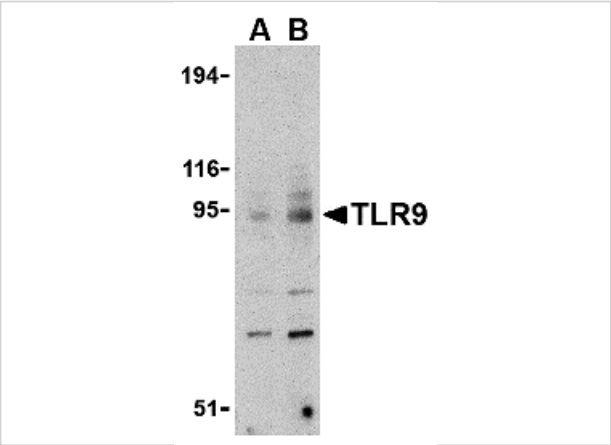
CATALOG NUMBER: 3737

Specifications

Host Species	Rabbit
Species Reactivity	Human, Mouse
Homology	Predicted species reactivity based on immunogen sequence: Pig: (81%), Bovine: (100%), Sheep: (100%)
Immunogen	TLR9 antibody was raised against a peptide corresponding to 16 amino acids near the carboxy terminus of human TLR9. The immunogen is located within amino acids 960 - 1010 of TLR9.
Conjugate	Unconjugated
Tested Applications	ELISA, IF, IHC-P, WB
User Note	Optimal dilutions for each application to be determined by the researcher.

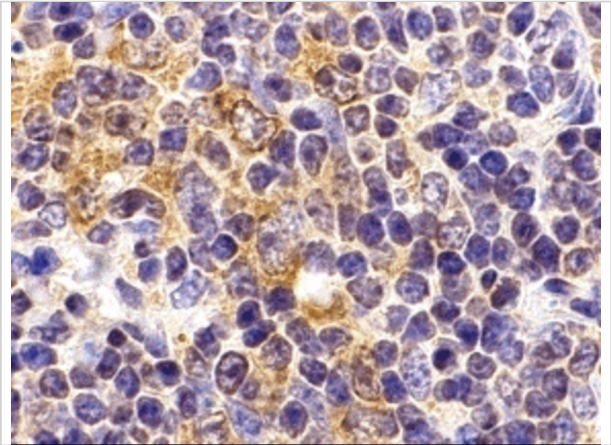
Properties

Purification	TLR9 Antibody is affinity chromatography purified via peptide column.
Clonality	Polyclonal
Isotype	IgG
Physical State	Liquid
Buffer	TLR9 Antibody is supplied in PBS containing 0.02% sodium azide.
Concentration	1 mg/mL
Storage Conditions	TLR9 antibody can be stored at 4°C for three months and -20°C, stable for up to one year. As with all antibodies care should be taken to avoid repeated freeze thaw cycles. Antibodies should not be exposed to prolonged high temperatures.



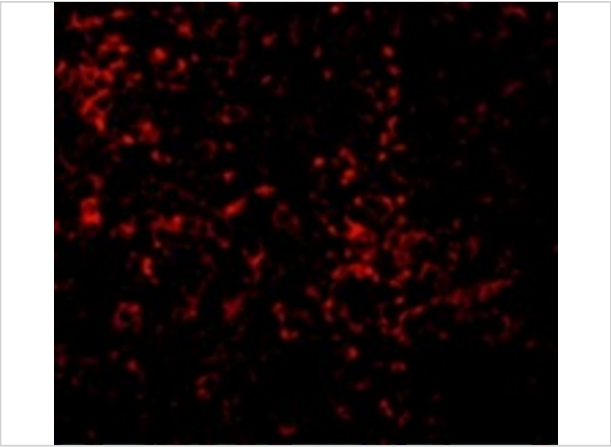
TLR9 Antibody 1

Western blot analysis of TLR9 in mouse spleen cell lysate with TLR9 antibody at (A) 0.5 and (B) 1 µg/mL.



TLR9 Antibody 2

Immunohistochemistry of TLR9 in mouse spleen cells with TLR9 antibody at 2 µg/mL.



TLR9 Antibody 3

Immunofluorescence of TLR9 in mouse spleen cells with TLR9 antibody at 10 µg/mL.

Disclaimer

Disclaimer	Optimal dilutions/concentrations should be determined by the end user. The information provided is a guideline for product use. This product is for research use only.
------------	--

For research use only. For additional information, visit ProSci's [Terms and Conditions Page](#).