

## NDFIP1 Antibody

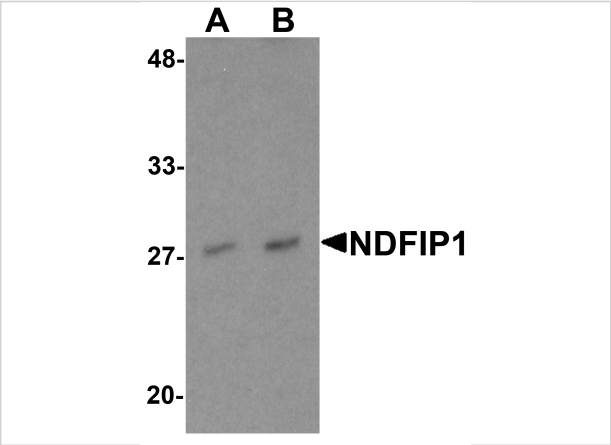
CATALOG NUMBER: 6977

### Specifications

Host Species	Rabbit
Species Reactivity	Human, Mouse
Homology	Predicted species reactivity based on immunogen sequence: Rat: (84%)
Immunogen	NDFIP1 antibody was raised against a 19 amino acid synthetic peptide near the amino terminus of human NDFIP1. The immunogen is located within the first 50 amino acids of NDFIP1.
Conjugate	Unconjugated
Tested Applications	ELISA, IF, IHC-P, WB
User Note	Optimal dilutions for each application to be determined by the researcher.
Specificity	NDFIP1 antibody is predicted to not cross-react with NDFIP2.
Predicted Molecular Weight	24 kDa

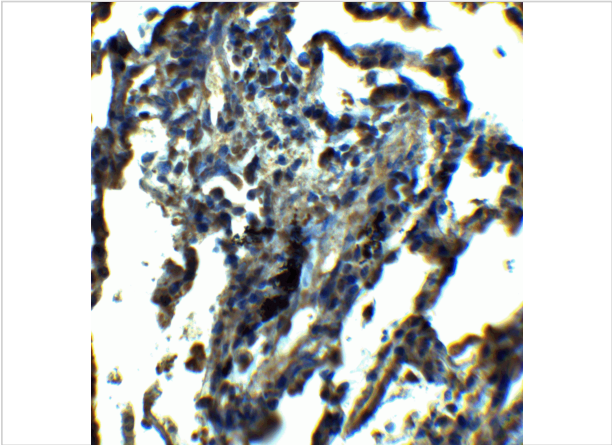
### Properties

Purification	NDFIP1 Antibody is affinity chromatography purified via peptide column.
Clonality	Polyclonal
Isotype	IgG
Physical State	Liquid
Buffer	NDFIP1 Antibody is supplied in PBS containing 0.02% sodium azide.
Concentration	1 mg/mL
Storage Conditions	NDFIP1 antibody can be stored at 4°C for three months and -20°C, stable for up to one year. As with all antibodies care should be taken to avoid repeated freeze thaw cycles. Antibodies should not be exposed to prolonged high temperatures.



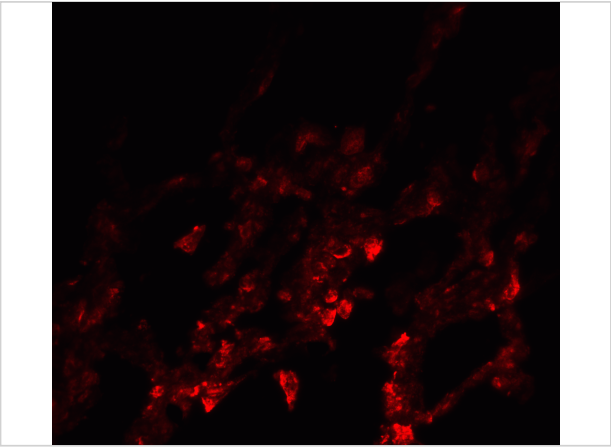
NDFIP1 Antibody 1

Western blot analysis of NDFIP1 in PC-3 cell lysate with NDFIP1 antibody at (A) 0.5 and (B) 1 µg/mL.



NDFIP1 Antibody 2

Immunohistochemistry of NDFIP1 in human lung tissue with NDFIP1 antibody at 5 µg/mL.



NDFIP1 Antibody 3

Immunofluorescence of NDFIP1 in human lung tissue with NDFIP1 antibody at 20 µg/mL.

Disclaimer

Disclaimer	Optimal dilutions/concentrations should be determined by the end user. The information provided is a guideline for product use. This product is for research use only.
------------	--

For research use only. For additional information, visit ProSci's [Terms and Conditions Page](#).