

SELK Antibody

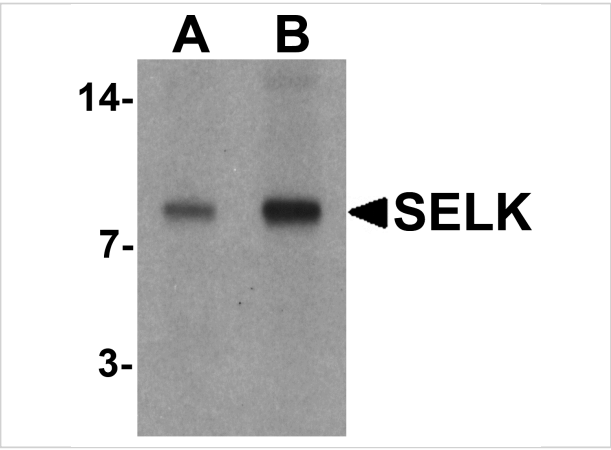
CATALOG NUMBER: 6975

Specifications

Host Species	Rabbit
Species Reactivity	Human, Mouse, Rat
Homology	Predicted species reactivity based on immunogen sequence: Bovine: (100%), Pig: (100%)
Immunogen	SELK antibody was raised against an 18 amino acid synthetic peptide near the carboxy terminus of human SELK. The immunogen is located within the last 50 amino acids of SELK.
Conjugate	Unconjugated
Tested Applications	ELISA, IF, WB
User Note	Optimal dilutions for each application to be determined by the researcher.
Predicted Molecular Weight	10 kDa

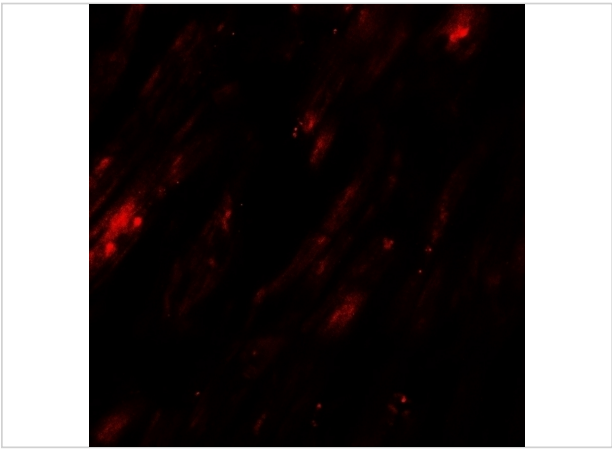
Properties

Purification	SELK Antibody is affinity chromatography purified via peptide column.
Clonality	Polyclonal
Isotype	IgG
Physical State	Liquid
Buffer	SELK Antibody is supplied in PBS containing 0.02% sodium azide.
Concentration	1 mg/mL
Storage Conditions	SELK antibody can be stored at 4°C for three months and -20°C, stable for up to one year. As with all antibodies care should be taken to avoid repeated freeze thaw cycles. Antibodies should not be exposed to prolonged high temperatures.



SELK Antibody 1

Western blot analysis of SELK in A20 cell lysate with SELK antibody at (A) 1 and (B) 2 $\mu\text{g/mL}$.



SELK Antibody 2

Immunofluorescence of SELK in human heart tissue with SELK antibody at 20 $\mu\text{g/mL}$.

Disclaimer

Disclaimer	Optimal dilutions/concentrations should be determined by the end user. The information provided is a guideline for product use. This product is for research use only.
------------	--

For research use only. For additional information, visit ProSci's [Terms and Conditions Page](#).