

TCTEX1D2 Antibody

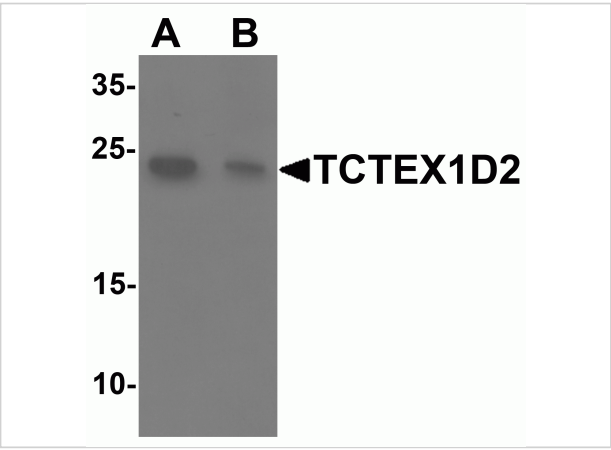
CATALOG NUMBER: 6953

Specifications

Host Species	Rabbit
Species Reactivity	Human
Homology	Predicted species reactivity based on immunogen sequence: Bovine: (81%)
Immunogen	TCTEX1D2 antibody was raised against a 16 amino acid synthetic peptide near the amino terminus of human TCTEX1D2. The immunogen is located within the first 50 amino acids of TCTEX1D2.
Conjugate	Unconjugated
Tested Applications	ELISA, IF, WB
User Note	Optimal dilutions for each application to be determined by the researcher.
Specificity	TCTEX1D2 is predicted to not cross-react with other members of the TCTEX-type family.
Predicted Molecular Weight	16 kDa

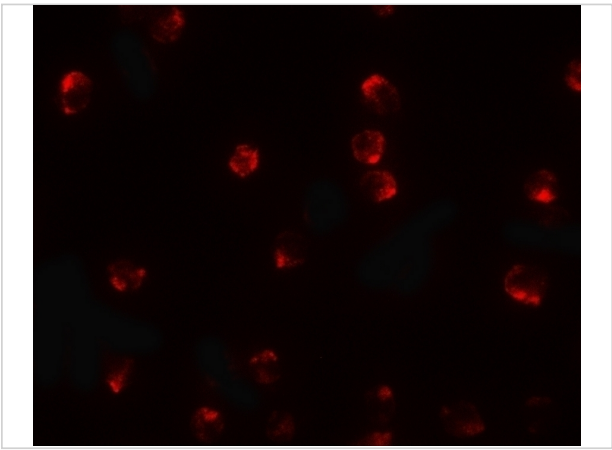
Properties

Purification	TCTEX1D2 Antibody is affinity chromatography purified via peptide column.
Clonality	Polyclonal
Isotype	IgG
Physical State	Liquid
Buffer	TCTEX1D2 Antibody is supplied in PBS containing 0.02% sodium azide.
Concentration	1 mg/mL
Storage Conditions	TCTEX1D2 antibody can be stored at 4°C for three months and -20°C, stable for up to one year. As with all antibodies care should be taken to avoid repeated freeze thaw cycles. Antibodies should not be exposed to prolonged high temperatures.



TCTEX1D2 Antibody 1

Western blot analysis of TCTEX1D2 in K562 cell lysate with TCTEX1D2 antibody at 1 µg/mL in (A) the absence and (B) the presence of blocking peptide.



TCTEX1D2 Antibody 2

Immunofluorescence of TCTEX1D2 in K562 cells with TCTEX1D2 antibody at 20 µg/mL.

Disclaimer

Disclaimer	Optimal dilutions/concentrations should be determined by the end user. The information provided is a guideline for product use. This product is for research use only.
------------	--

For research use only. For additional information, visit ProSci's [Terms and Conditions Page](#).