

COH1 Antibody

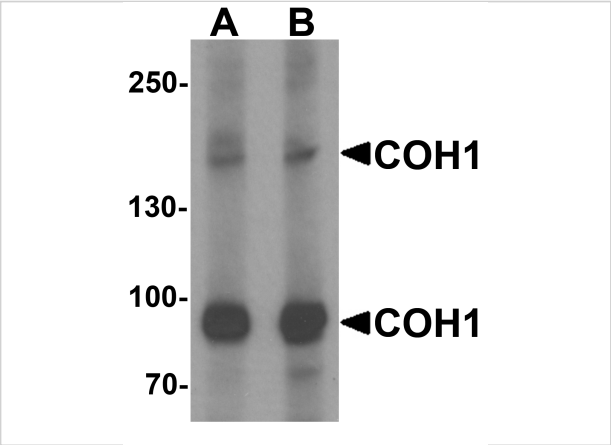
CATALOG NUMBER: 6931

Specifications

Host Species	Rabbit
Species Reactivity	Human, Mouse, Rat
Immunogen	COH1 antibody was raised against a 17 amino acid synthetic peptide near the amino terminus of human COH1. The immunogen is located within amino acids 90 - 140 of COH1.
Conjugate	Unconjugated
Tested Applications	ELISA, IF, WB
User Note	Optimal dilutions for each application to be determined by the researcher.
Specificity	At least five alternatively spliced transcript variants have been observed. COH1 detects two isoforms.

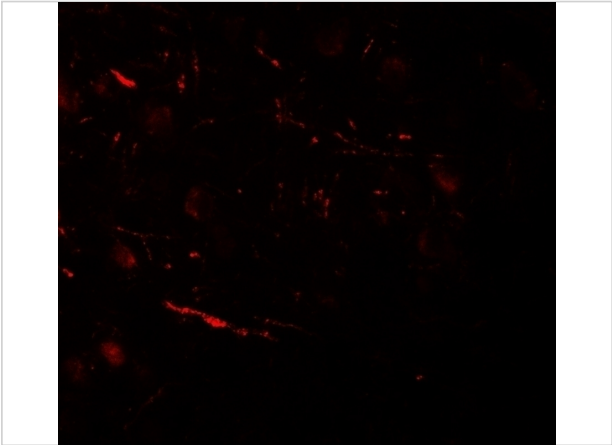
Properties

Purification	COH1 Antibody is affinity chromatography purified via peptide column.
Clonality	Polyclonal
Isotype	IgG
Physical State	Liquid
Buffer	COH1 Antibody is supplied in PBS containing 0.02% sodium azide.
Concentration	1 mg/mL
Storage Conditions	COH1 antibody can be stored at 4°C for three months and -20°C, stable for up to one year. As with all antibodies care should be taken to avoid repeated freeze thaw cycles. Antibodies should not be exposed to prolonged high temperatures.



COH1 Antibody 1

Western blot analysis of COH1 in SK-N-SH cell lysate with COH1 antibody at (A) 1 and (B) 2 µg/mL.



COH1 Antibody 2

Immunofluorescence of COH1 in human brain tissue with COH1 antibody at 20 µg/mL.

Disclaimer

Disclaimer	Optimal dilutions/concentrations should be determined by the end user. The information provided is a guideline for product use. This product is for research use only.
-------------------	--

For research use only. For additional information, visit ProSci's [Terms and Conditions Page](#).