

CASK Antibody

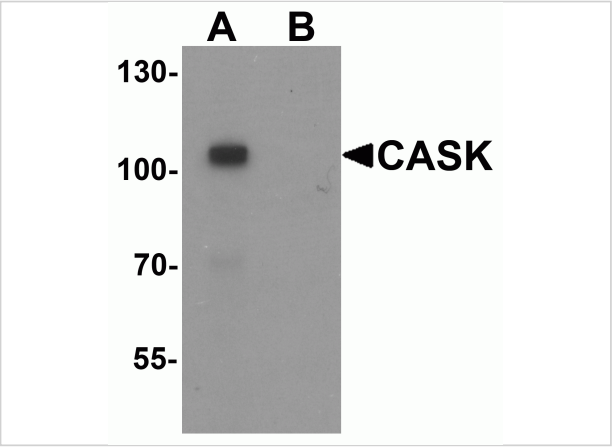
CATALOG NUMBER: 6921

Specifications

Host Species	Rabbit
Species Reactivity	Human, Mouse, Rat
Immunogen	CASK antibody was raised against a 16 amino acid synthetic peptide near the amino terminus of human CASK. The immunogen is located within amino acids 760 - 810 of CASK.
Conjugate	Unconjugated
Tested Applications	ELISA, IF, WB
User Note	Optimal dilutions for each application to be determined by the researcher.
Specificity	At least six alternatively spliced transcript variants have been observed.

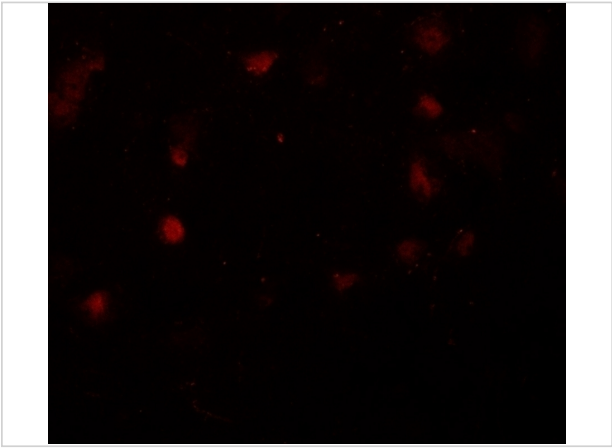
Properties

Purification	CASK Antibody is affinity chromatography purified via peptide column.
Clonality	Polyclonal
Isotype	IgG
Physical State	Liquid
Buffer	CASK Antibody is supplied in PBS containing 0.02% sodium azide.
Concentration	1 mg/mL
Storage Conditions	CASK antibody can be stored at 4°C for three months and -20°C, stable for up to one year. As with all antibodies care should be taken to avoid repeated freeze thaw cycles. Antibodies should not be exposed to prolonged high temperatures.



CASK Antibody 1

Western blot analysis of CASK in mouse brain tissue lysate with CASK antibody at 1 µg/ml in (A) the absence and (B) the presence of blocking peptide.



CASK Antibody 2

Immunofluorescence of CASK in human brain tissue with CASK antibody at 20 µg/mL.

Disclaimer

Disclaimer	Optimal dilutions/concentrations should be determined by the end user. The information provided is a guideline for product use. This product is for research use only.
------------	--

For research use only. For additional information, visit ProSci's [Terms and Conditions Page](#).