

## SARM Antibody

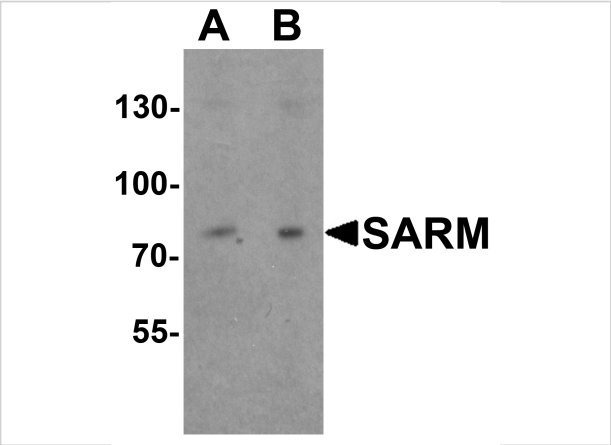
CATALOG NUMBER: 6917

### Specifications

Host Species	Rabbit
Species Reactivity	Human, Mouse, Rat
Homology	Predicted species reactivity based on immunogen sequence: Pig: (88%)
Immunogen	SARM antibody was raised against a 16 amino acid synthetic peptide near the amino terminus of human SARM. The immunogen is located within amino acids 30 - 80 of SARM.
Conjugate	Unconjugated
Tested Applications	ELISA, IF, WB
User Note	Optimal dilutions for each application to be determined by the researcher.
Specificity	At least three alternatively spliced transcript variants encoding distinct isoforms have been observed. SARM antibody recognize the longest isoform.

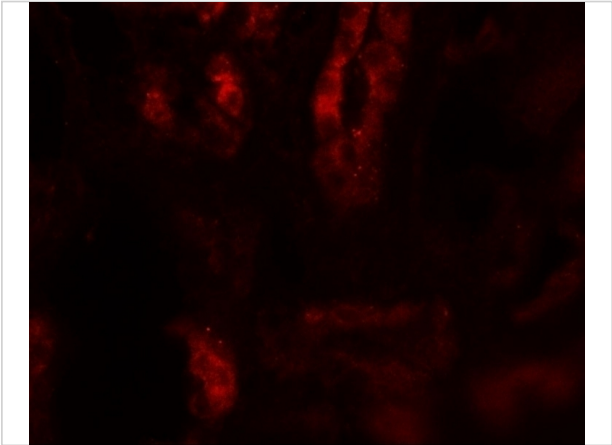
### Properties

Purification	SARM Antibody is affinity chromatography purified via peptide column.
Clonality	Polyclonal
Isotype	IgG
Physical State	Liquid
Buffer	SARM Antibody is supplied in PBS containing 0.02% sodium azide.
Concentration	1 mg/mL
Storage Conditions	SARM antibody can be stored at 4°C for three months and -20°C, stable for up to one year. As with all antibodies care should be taken to avoid repeated freeze thaw cycles. Antibodies should not be exposed to prolonged high temperatures.



SARM Antibody 1

Western blot analysis of SARM in Daudi cell lysate with SARM antibody at (A) 1 and (B) 2 µg/mL.



SARM Antibody 2

Immunofluorescence of SARM in human kidney tissue with SARM antibody at 20 µg/mL.

Disclaimer

Disclaimer	Optimal dilutions/concentrations should be determined by the end user. The information provided is a guideline for product use. This product is for research use only.
------------	--

For research use only. For additional information, visit ProSci's [Terms and Conditions Page](#).