

TET2 Antibody

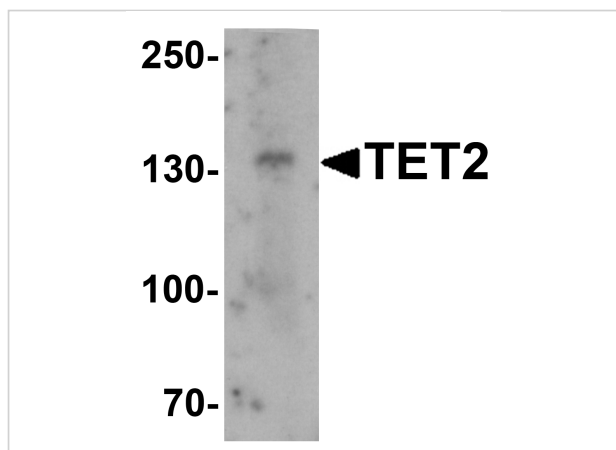
CATALOG NUMBER: 6915

Specifications

Host Species	Rabbit
Species Reactivity	Human
Homology	Predicted species reactivity based on immunogen sequence: Mouse: (89%)
Immunogen	TET2 antibody was raised against an 18 amino acid synthetic peptide near the amino terminus of human TET2. The immunogen is located within amino acids 20 - 70 of TET2.
Conjugate	Unconjugated
Tested Applications	ELISA, IF, IHC-P, WB
User Note	Optimal dilutions for each application to be determined by the researcher.
Specificity	At least two isoforms of TET2 are known to exist; this antibody will detect both isoforms.

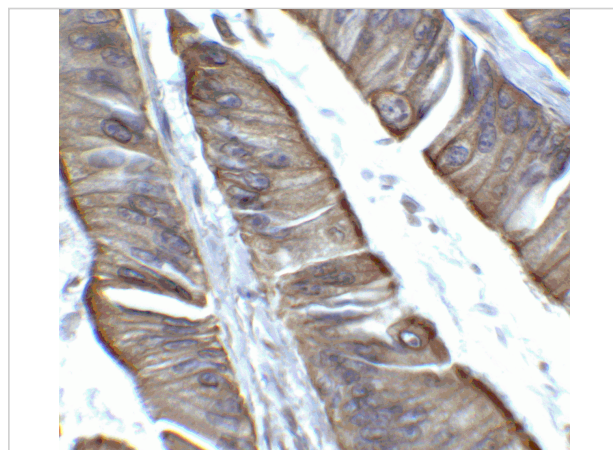
Properties

Purification	TET2 Antibody is affinity chromatography purified via peptide column.
Clonality	Polyclonal
Isotype	IgG
Physical State	Liquid
Buffer	TET2 Antibody is supplied in PBS containing 0.02% sodium azide.
Concentration	1 mg/mL
Storage Conditions	TET2 antibody can be stored at 4°C for three months and -20°C, stable for up to one year. As with all antibodies care should be taken to avoid repeated freeze thaw cycles. Antibodies should not be exposed to prolonged high temperatures.



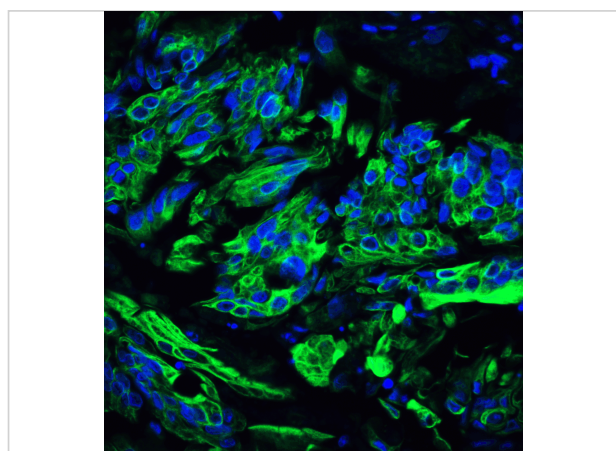
TET2 Antibody 1

Western blot analysis of TET2 in SK-N-SH cell lysate with TET2 antibody at 1 µg/mL.



TET2 Antibody 2

Immunohistochemistry of TET2 in human colon carcinoma tissue with TET2 antibody at 2 µg/mL.



TET2 Antibody 3

Immunofluorescence of TET2 in human colon carcinoma tissue with TET2 antibody at 20 µg/mL.

Green: TET2 Antibody (6915)
Blue: DAPI staining

Disclaimer

Disclaimer

Optimal dilutions/concentrations should be determined by the end user. The information provided is a guideline for product use. This product is for research use only.

For research use only. For additional information, visit ProSci's [Terms and Conditions Page](#).