

PHOX2B Antibody

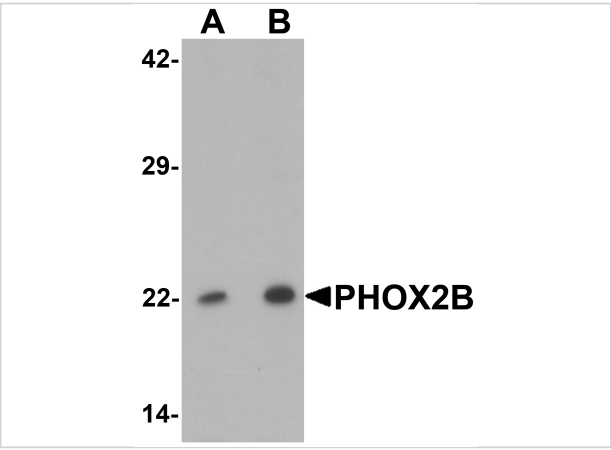
CATALOG NUMBER: 6913

Specifications

Host Species	Rabbit
Species Reactivity	Human, Mouse, Rat
Homology	Predicted species reactivity based on immunogen sequence: Chicken: (75%), Bovine: (79%)
Immunogen	PHOX2B antibody was raised against a 15 amino acid synthetic peptide near the center of human PHOX2B. The immunogen is located within amino acids 130 - 180 of PHOX2B.
Conjugate	Unconjugated
Tested Applications	ELISA, WB
User Note	Optimal dilutions for each application to be determined by the researcher.
Specificity	PHOX2B antibody is predicted to not cross-react with other paired homeobox family members.

Properties

Purification	PHOX2B Antibody is affinity chromatography purified via peptide column.
Clonality	Polyclonal
Isotype	IgG
Physical State	Liquid
Buffer	PHOX2B Antibody is supplied in PBS containing 0.02% sodium azide.
Concentration	1 mg/mL
Storage Conditions	PHOX2B antibody can be stored at 4°C for three months and -20°C, stable for up to one year. As with all antibodies care should be taken to avoid repeated freeze thaw cycles. Antibodies should not be exposed to prolonged high temperatures.



PHOX2B Antibody 1

Western blot analysis of PHOX2B in 293 cell lysate with PHOX2B antibody at (A) 1 and (B) 2 µg/mL.

Disclaimer

Disclaimer	Optimal dilutions/concentrations should be determined by the end user. The information provided is a guideline for product use. This product is for research use only.
------------	--

For research use only. For additional information, visit ProSci's [Terms and Conditions Page](#).