

ZBTB40 Antibody

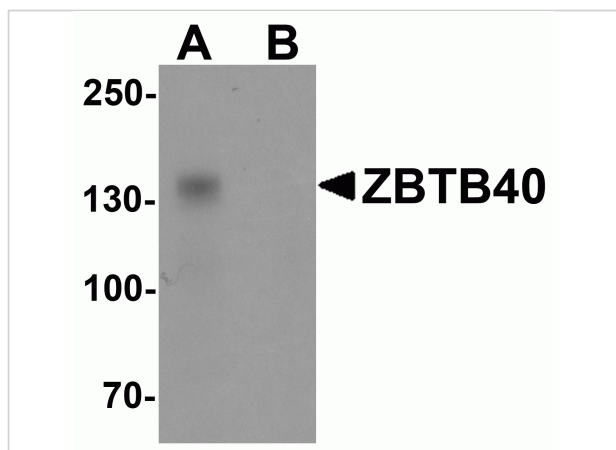
CATALOG NUMBER: 6905

Specifications

Host Species	Rabbit
Species Reactivity	Human
Immunogen	ZBTB40 antibody was raised against a 19 amino acid synthetic peptide near the amino terminus of human ZBTB40. The immunogen is located within amino acids 180 - 230 of ZBTB40.
Conjugate	Unconjugated
Tested Applications	ELISA, IF, WB
User Note	Optimal dilutions for each application to be determined by the researcher.
Specificity	ZBTB40 antibody is human specific. At least two isoforms of ZBTB40 are known to exist. This antibody is predicted to not cross-react with other ZBTB protein family members.

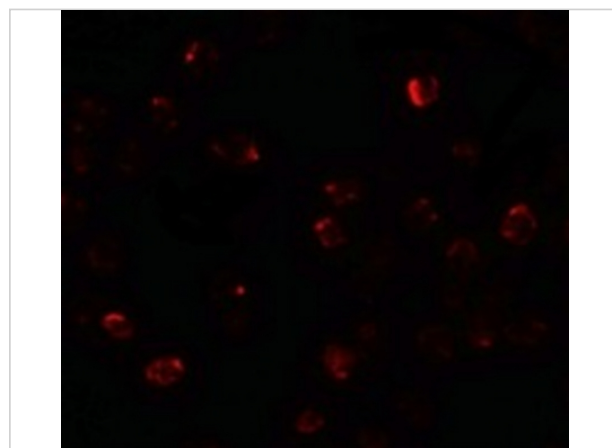
Properties

Purification	ZBTB40 Antibody is affinity chromatography purified via peptide column.
Clonality	Polyclonal
Isotype	IgG
Physical State	Liquid
Buffer	ZBTB40 Antibody is supplied in PBS containing 0.02% sodium azide.
Concentration	1 mg/mL
Storage Conditions	ZBTB40 antibody can be stored at 4°C for three months and -20°C, stable for up to one year. As with all antibodies care should be taken to avoid repeated freeze thaw cycles. Antibodies should not be exposed to prolonged high temperatures.



ZBTB40 Antibody 1

Western blot analysis of ZBTB40 in Raji cell lysate with ZBTB40 antibody at 0.5 µg/ml in (A) the absence and (B) the presence of blocking peptide.



ZBTB40 Antibody 2

Immunofluorescence of ZBTB40 in Raji cells with ZBTB40 antibody at 20 µg/mL.

Disclaimer

Disclaimer

Optimal dilutions/concentrations should be determined by the end user. The information provided is a guideline for product use. This product is for research use only.

For research use only. For additional information, visit ProSci's [Terms and Conditions Page](#).