

ATF6 Antibody

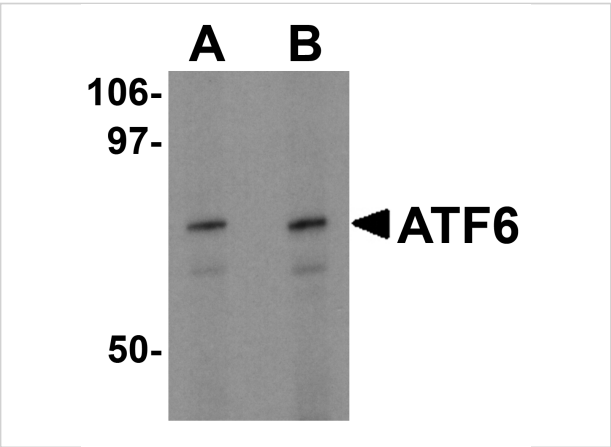
CATALOG NUMBER: 3681

Specifications

Host Species	Rabbit
Species Reactivity	Human, Mouse
Homology	Predicted species reactivity based on immunogen sequence: Rat: (100%)
Immunogen	ATF6 antibody was raised against a 16 amino acid synthetic peptide from near the carboxy terminus of human ATF6. The immunogen is located within amino acids 470 - 520 of ATF6.
Conjugate	Unconjugated
Tested Applications	ELISA, ICC, IF, IHC-P, WB
User Note	Optimal dilutions for each application to be determined by the researcher.

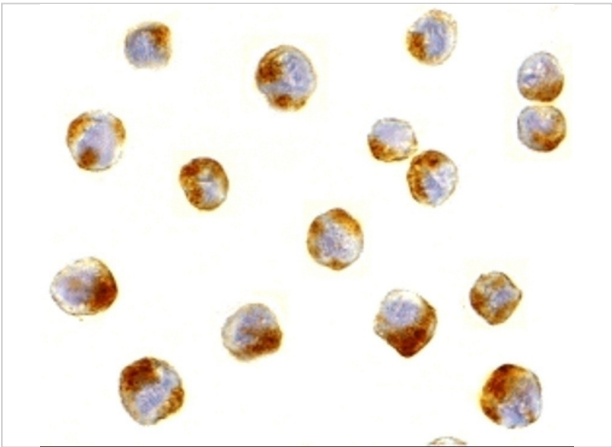
Properties

Purification	ATF6 Antibody is affinity chromatography purified via peptide column.
Clonality	Polyclonal
Isotype	IgG
Physical State	Liquid
Buffer	ATF6 Antibody is supplied in PBS containing 0.02% sodium azide.
Concentration	1 mg/mL
Storage Conditions	ATF6 antibody can be stored at 4°C for three months and -20°C, stable for up to one year. As with all antibodies care should be taken to avoid repeated freeze thaw cycles. Antibodies should not be exposed to prolonged high temperatures.



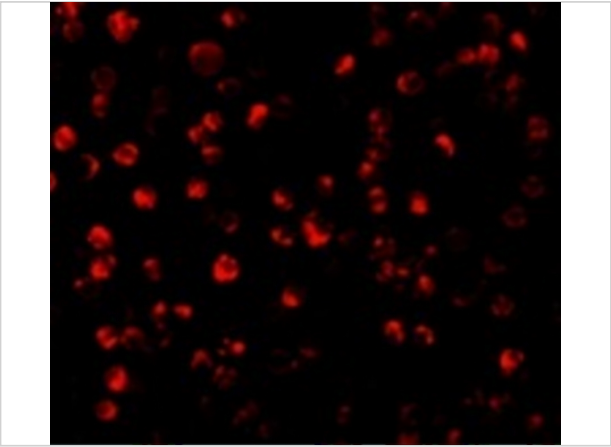
ATF6 Antibody 1

Western blot analysis of ATF6 in EL4 cell lysate with ATF6 antibody at (A) 0.5 and (B) 1 µg/mL.



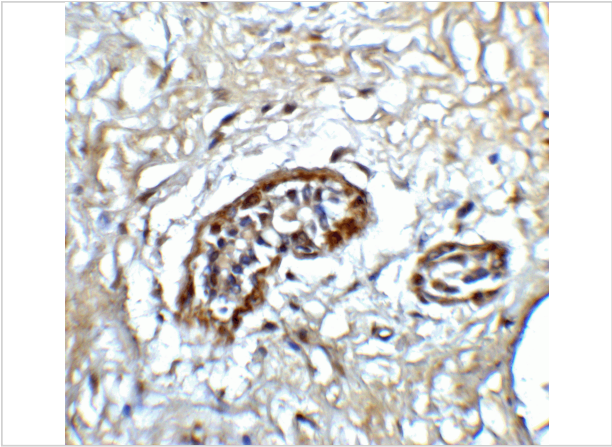
ATF6 Antibody 2

Immunocytochemical staining of MCF7 cells using ATF6 antibody at 10 µg/mL.



ATF6 Antibody 3

Immunofluorescence of ATF6 in MCF7 cells with ATF6 antibody at 10 µg/mL.



ATF6 Antibody 4

Immunohistochemistry of ATF6 in human breast tissue with ATF6 antibody at 5 µg/mL.

Disclaimer

Disclaimer	Optimal dilutions/concentrations should be determined by the end user. The information provided is a guideline for product use. This product is for research use only.
------------	--

For research use only. For additional information, visit ProSci's [Terms and Conditions Page](#).