

FCHO2 Antibody

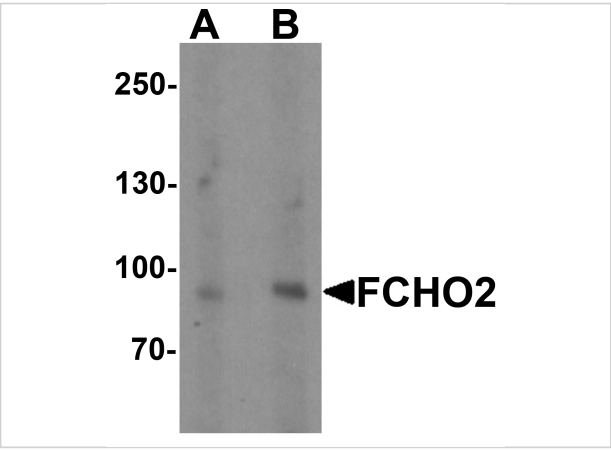
CATALOG NUMBER: 6871

Specifications

Host Species	Rabbit
Species Reactivity	Human, Mouse, Rat
Immunogen	FCHO2 antibody was raised against a 15 amino acid synthetic peptide near the center of human FCHO2. The immunogen is located within amino acids 340 - 390 of FCHO2.
Conjugate	Unconjugated
Tested Applications	ELISA, IF, IHC-P, WB
User Note	Optimal dilutions for each application to be determined by the researcher.
Specificity	FCHO2 antibody is predicted to not cross-react with other FCHO protein family members. At least the isoforms of FCHO2 are known to exist; this antibody will detect only the two longest isoforms.

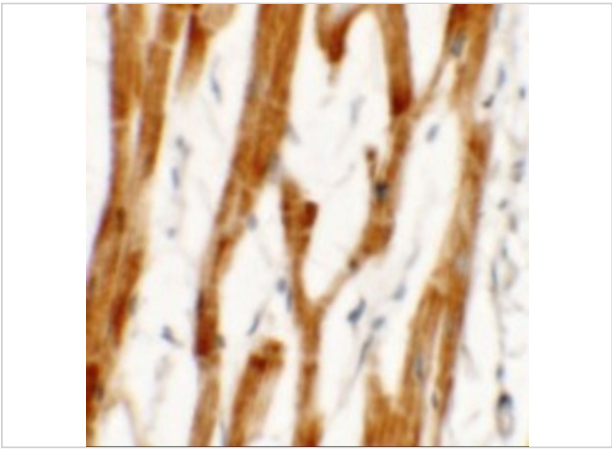
Properties

Purification	FCHO2 Antibody is affinity chromatography purified via peptide column.
Clonality	Polyclonal
Isotype	IgG
Physical State	Liquid
Buffer	FCHO2 Antibody is supplied in PBS containing 0.02% sodium azide.
Concentration	1 mg/mL
Storage Conditions	FCHO2 antibody can be stored at 4°C for three months and -20°C, stable for up to one year. As with all antibodies care should be taken to avoid repeated freeze thaw cycles. Antibodies should not be exposed to prolonged high temperatures.



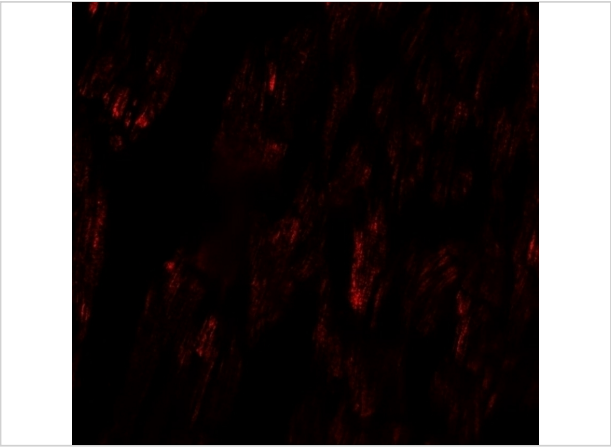
FCHO2 Antibody 1

Western blot analysis of FCHO2 in rat heart tissue lysate with FCHO2 antibody at (A) 1 and (B) 2 $\mu\text{g}/\text{ml}$



FCHO2 Antibody 2

Immunohistochemistry of FCHO2 in human heart tissue with FCHO2 antibody at 2.5 $\mu\text{g}/\text{mL}$.



FCHO2 Antibody 3

Immunofluorescence of FCHO2 in human heart tissue with FCHO2 antibody at 20 $\mu\text{g}/\text{mL}$.

Disclaimer

Disclaimer	Optimal dilutions/concentrations should be determined by the end user. The information provided is a guideline for product use. This product is for research use only.
------------	--

For research use only. For additional information, visit ProSci's [Terms and Conditions Page](#).