

NIBRIN Antibody

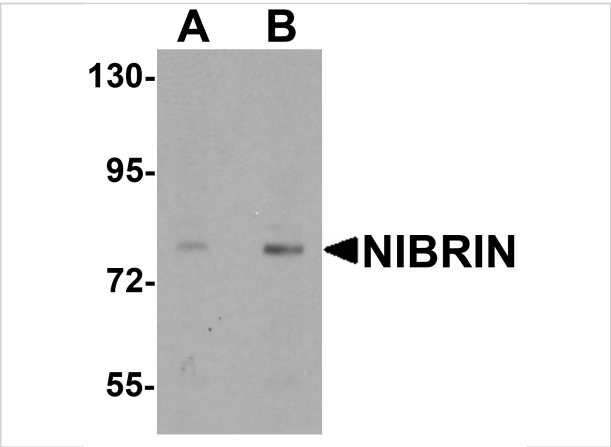
CATALOG NUMBER: 6841

Specifications

Host Species	Rabbit
Species Reactivity	Human, Mouse, Rat
Homology	Predicted species reactivity based on immunogen sequence: Chicken: (85%)
Immunogen	NIBRIN antibody was raised against a 16 amino acid synthetic peptide near the amino terminus of human NIBRIN. The immunogen is located within amino acids 50 - 100 of NIBRIN.
Conjugate	Unconjugated
Tested Applications	ELISA, IF, IHC-P, WB
User Note	Optimal dilutions for each application to be determined by the researcher.
Specificity	At least three alternatively spliced transcript isoforms of NIBRIN are known to exist.

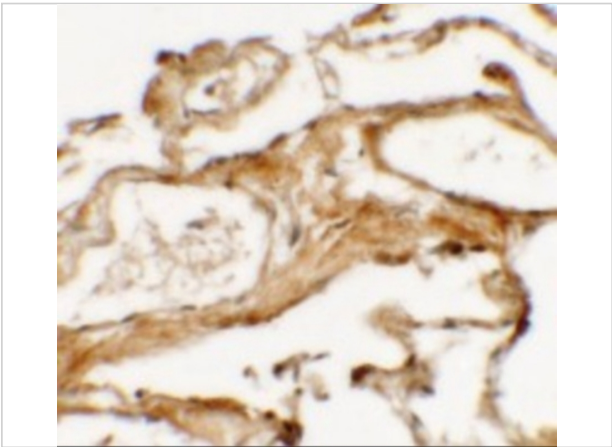
Properties

Purification	NIBRIN Antibody is affinity chromatography purified via peptide column.
Clonality	Polyclonal
Isotype	IgG
Physical State	Liquid
Buffer	NIBRIN Antibody is supplied in PBS containing 0.02% sodium azide.
Concentration	1 mg/mL
Storage Conditions	NIBRIN antibody can be stored at 4°C for three months and -20°C, stable for up to one year. As with all antibodies care should be taken to avoid repeated freeze thaw cycles. Antibodies should not be exposed to prolonged high temperatures.



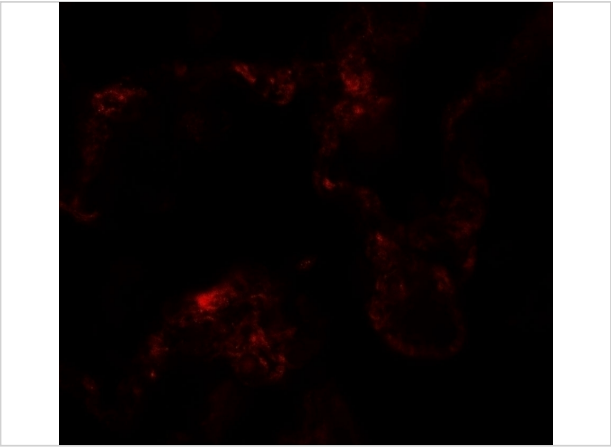
NIBRIN Antibody 1

Western blot analysis of NIBRIN in rat lung tissue lysate with NIBRIN antibody at (A) 1 and (B) 2 $\mu\text{g/mL}$.



NIBRIN Antibody 2

Immunohistochemistry of NIBRIN (NT) in human lung tissue with NIBRIN (NT) antibody at 2.5 $\mu\text{g/mL}$.



NIBRIN Antibody 3

Immunofluorescence of NIBRIN in human lung tissue with NIBRIN antibody at 20 $\mu\text{g/mL}$.

Disclaimer

Disclaimer	Optimal dilutions/concentrations should be determined by the end user. The information provided is a guideline for product use. This product is for research use only.
------------	--

For research use only. For additional information, visit ProSci's [Terms and Conditions Page](#).