

PHOX2A Antibody

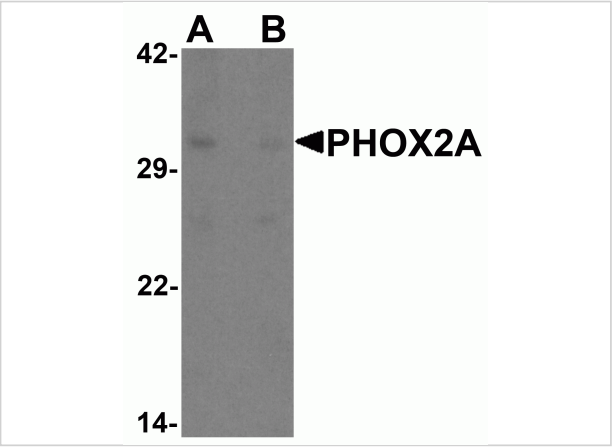
CATALOG NUMBER: 6827

Specifications

Host Species	Rabbit
Species Reactivity	Human, Mouse, Rat
Immunogen	PHOX2A antibody was raised against a 16 amino acid synthetic peptide near the carboxy terminus of human PHOX2A. The immunogen is located within the last 50 amino acids of PHOX2A.
Conjugate	Unconjugated
Tested Applications	ELISA, IF, IHC-P, WB
User Note	Optimal dilutions for each application to be determined by the researcher.
Specificity	PHOX2A antibody is predicted to not cross-react with other paired homeobox family members.

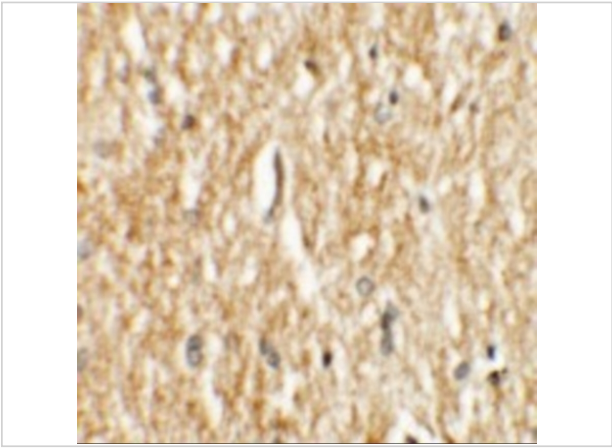
Properties

Purification	PHOX2A Antibody is affinity chromatography purified via peptide column.
Clonality	Polyclonal
Isotype	IgG
Physical State	Liquid
Buffer	PHOX2A Antibody is supplied in PBS containing 0.02% sodium azide.
Concentration	1 mg/mL
Storage Conditions	PHOX2A antibody can be stored at 4°C for three months and -20°C, stable for up to one year. As with all antibodies care should be taken to avoid repeated freeze thaw cycles. Antibodies should not be exposed to prolonged high temperatures.



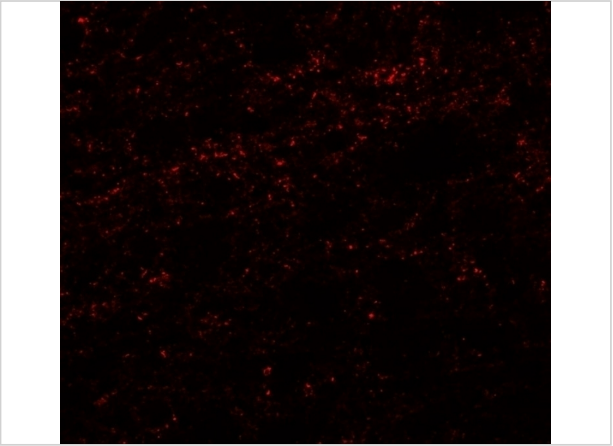
PHOX2A Antibody 1

Western blot analysis of PHOX2A in rat brain tissue lysate with PHOX2A antibody at 1 µg/ml in (A) the absence and (B) the presence of blocking peptide.



PHOX2A Antibody 2

Immunohistochemistry of PHOX2A in human brain tissue with PHOX2A antibody at 2.5 µg/mL.



PHOX2A Antibody 3

Immunofluorescence of PHOX2A in human brain tissue with PHOX2A antibody at 20 µg/mL.

Disclaimer

Disclaimer	Optimal dilutions/concentrations should be determined by the end user. The information provided is a guideline for product use. This product is for research use only.
------------	------------------------------------------------------------------------------------------------------------------------------------------------------------------------

For research use only. For additional information, visit ProSci's [Terms and Conditions Page](#).