

## BAP31 Antibody

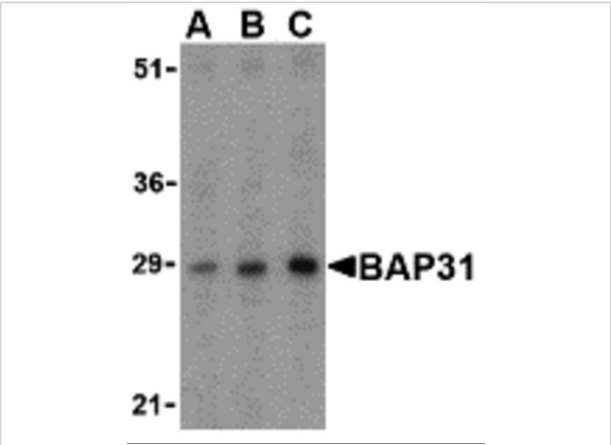
CATALOG NUMBER: 3675

### Specifications

Host Species	Rabbit
Species Reactivity	Human, Mouse, Rat
Immunogen	Anti-BAP31 antibody ( <b>3675</b> ) was raised against a peptide corresponding to 16 amino acids near the center of human BAP31. The immunogen is located within amino acids 130 - 180 of BAP31.
Conjugate	Unconjugated
Tested Applications	ELISA, IHC-P, WB
User Note	Optimal dilutions for each application to be determined by the researcher.
Predicted Molecular Weight	Predicted: 28 or 34kD Observed: 28 kD

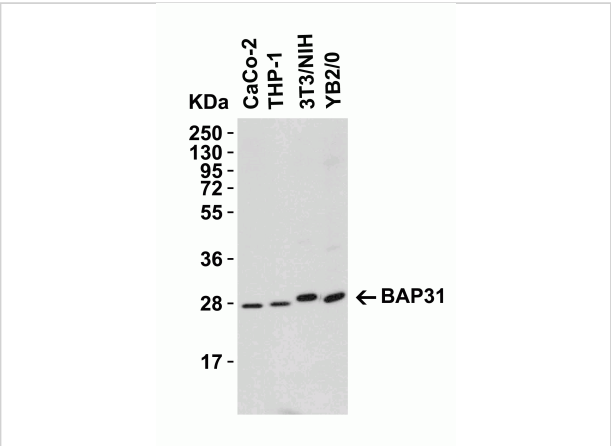
### Properties

Purification	BAP31 Antibody is affinity chromatography purified via peptide column.
Clonality	Polyclonal
Isotype	IgG
Physical State	Liquid
Buffer	BAP31 Antibody is supplied in PBS containing 0.02% sodium azide.
Concentration	1 mg/mL
Storage Conditions	BAP31 antibody can be stored at 4°C for three months and -20°C, stable for up to one year. As with all antibodies care should be taken to avoid repeated freeze thaw cycles. Antibodies should not be exposed to prolonged high temperatures.



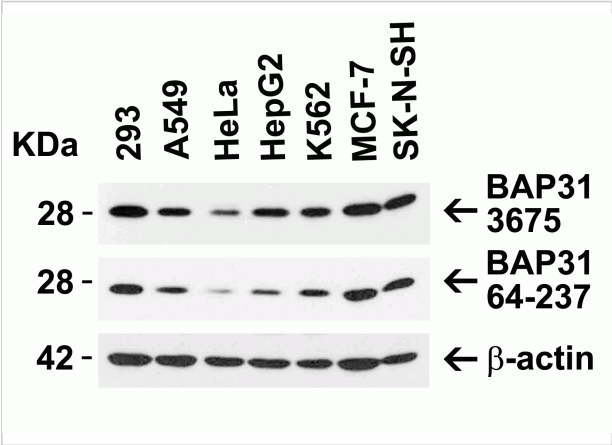
### BAP31 Antibody 1

**Figure 1 Western Blot Validation in Rat Lung Tissue Lysate**  
 Loading: 15 µg of lysates per lane. Antibodies: BAP31, 3675 (A: 0.5 µg/mL, B: 1 µg/mL and C: 2 µg/mL), 1h incubation at...



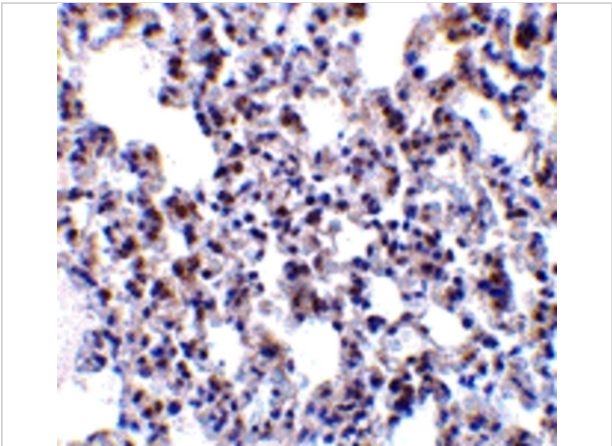
### BAP31 Antibody 3

**Figure 3 Western Blot Validation in Human, Mouse (NIH/3T3) and Rat (YB2/O) Cell Lines**  
 Loading: 15 µg of lysates per lane. Antibodies: BAP31, 3675 (1 µg/mL), 1h incubation at RT i...



### BAP31 Antibody 2

**Figure 2 Independent Antibody Validation (IAV) via Protein Expression Profile in Human Cell Lines**  
 Loading: 15 µg of lysates per lane. Antibodies: BAP31, 3675 (0.5 µg/mL), BAP31,...



### BAP31 Antibody 4

**Figure 4 Immunohistochemistry Validation of BAP31 in Rat Lung Tissue**  
 Immunohistochemical analysis of paraffin-embedded rat lung tissue using anti-BAP31 antibody (3675) at 10 µ...

## Disclaimer

#### Disclaimer

Optimal dilutions/concentrations should be determined by the end user. The information provided is a guideline for product use. This product is for research use only.

For research use only. For additional information, visit ProSci's [Terms and Conditions Page](#).