

CCP110 Antibody

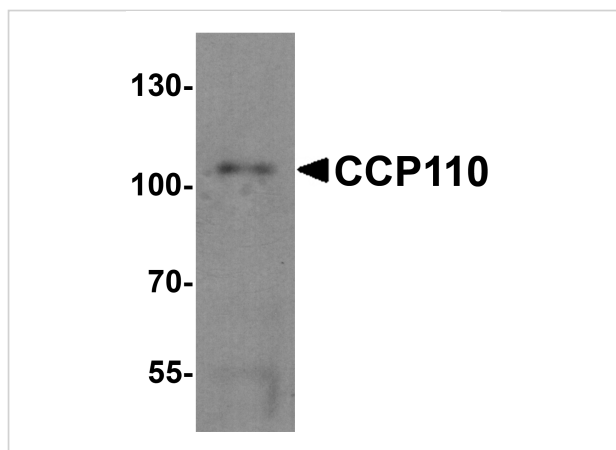
CATALOG NUMBER: 6825

Specifications

Host Species	Rabbit
Species Reactivity	Human, Mouse, Rat
Immunogen	CCP110 antibody was raised against a 17 amino acid synthetic peptide near the carboxy terminus of human CCP110. The immunogen is located within the last 50 amino acids of CCP110.
Conjugate	Unconjugated
Tested Applications	ELISA, IF, IHC-P, WB
User Note	Optimal dilutions for each application to be determined by the researcher.
Specificity	Two isoforms of CCP110 are known to exist; this antibody will only detect the longer isoform
Predicted Molecular Weight	Predicted: 110 kDa Observed: 110 kDa

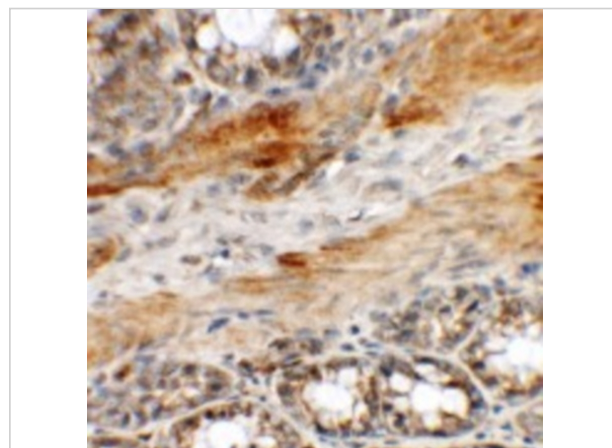
Properties

Purification	CCP110 Antibody is affinity chromatography purified via peptide column.
Clonality	Polyclonal
Isotype	IgG
Physical State	Liquid
Buffer	CCP110 Antibody is supplied in PBS containing 0.02% sodium azide.
Concentration	1 mg/mL
Storage Conditions	CCP110 antibody can be stored at 4°C for three months and -20°C, stable for up to one year. As with all antibodies care should be taken to avoid repeated freeze thaw cycles. Antibodies should not be exposed to prolonged high temperatures.



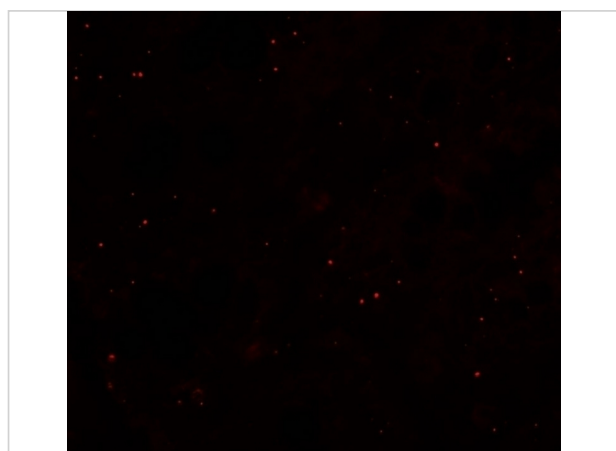
CCP110 Antibody 1

Western blot analysis of CCP110 in human colon tissue lysate with CCP110 antibody at 1 µg/mL.



CCP110 Antibody 2

Immunohistochemistry of CCP110 in rat colon tissue with CCP110 antibody at 5 µg/mL.



CCP110 Antibody 3

Immunofluorescence of CCP110 in rat colon tissue with CCP110 antibody at 20 µg/mL.

Disclaimer

Disclaimer

Optimal dilutions/concentrations should be determined by the end user. The information provided is a guideline for product use. This product is for research use only.

For research use only. For additional information, visit ProSci's [Terms and Conditions Page](#).