

ZFX Antibody

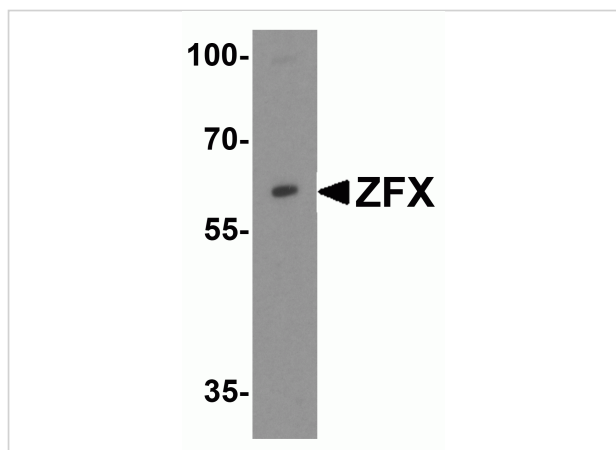
CATALOG NUMBER: 6811

Specifications

Host Species	Rabbit
Species Reactivity	Human, Mouse, Rat
Homology	Predicted species reactivity based on immunogen sequence: Bovine: (94%)
Immunogen	ZFX antibody was raised against a 19 amino acid synthetic peptide near the carboxy terminus of human ZFX. The immunogen is located within the last 50 amino acids of ZFX.
Conjugate	Unconjugated
Tested Applications	ELISA, IF, IHC-P, WB
User Note	Optimal dilutions for each application to be determined by the researcher.
Specificity	ZFX antibody is human, mouse and rat reactive. Multiple isoforms of ZFX are known to exist. ZFX antibody will detect isoform 1 and 2 of ZFX.
Predicted Molecular Weight	Predicted: 89, 63 kDa Observed: 63 kDa

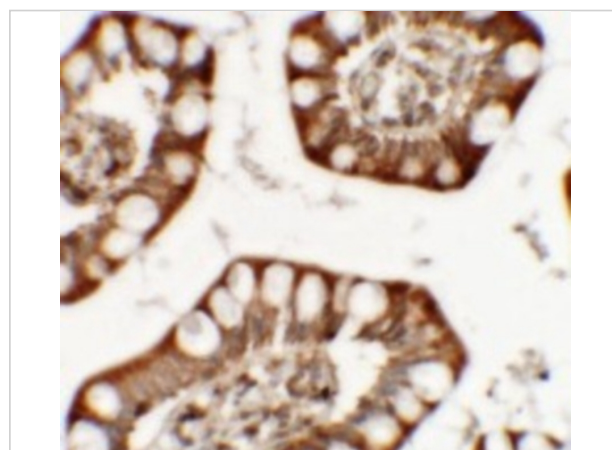
Properties

Purification	ZFX Antibody is affinity chromatography purified via peptide column.
Clonality	Polyclonal
Isotype	IgG
Physical State	Liquid
Buffer	ZFX Antibody is supplied in PBS containing 0.02% sodium azide.
Concentration	1 mg/mL
Storage Conditions	ZFX antibody can be stored at 4°C for three months and -20°C, stable for up to one year. As with all antibodies care should be taken to avoid repeated freeze thaw cycles. Antibodies should not be exposed to prolonged high temperatures.



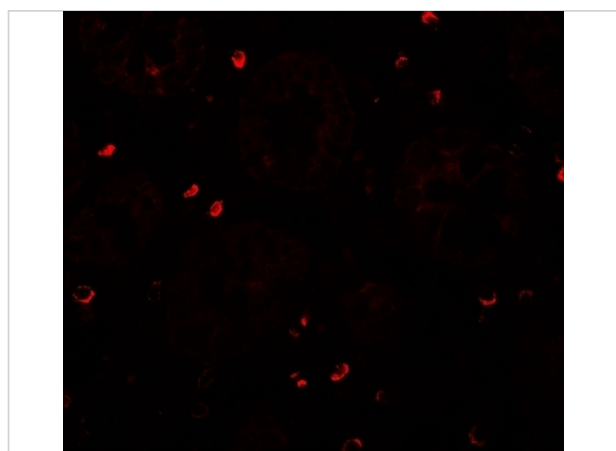
ZFX Antibody 1

Western blot analysis of ZFX in Daudi cell lysate with ZFX antibody at 1 µg/mL.



ZFX Antibody 2

Immunohistochemistry of ZFX in human small intestine tissue with ZFX antibody at 5 µg/mL.



ZFX Antibody 3

Immunofluorescence of ZFX in human small intestine tissue with ZFX antibody at 20 µg/mL.

Disclaimer

Disclaimer

Optimal dilutions/concentrations should be determined by the end user. The information provided is a guideline for product use. This product is for research use only.

For research use only. For additional information, visit ProSci's [Terms and Conditions Page](#).