

RLP2 Antibody

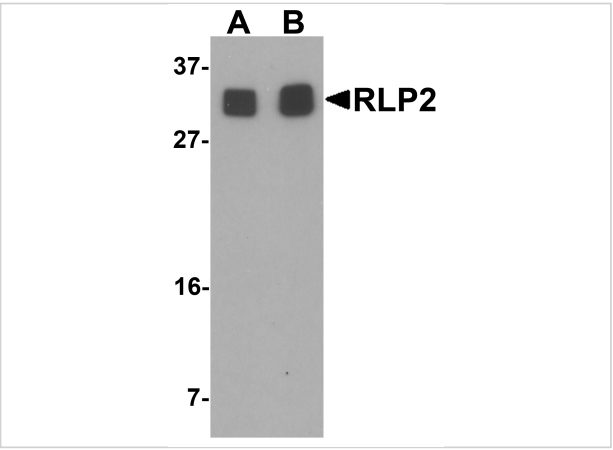
CATALOG NUMBER: 6799

Specifications

Host Species	Rabbit
Species Reactivity	Human
Homology	Predicted species reactivity based on immunogen sequence: Mouse: (100%), Rat: (100%), Bovine: (100%)
Immunogen	RLP2 antibody was raised against an 16 amino acid synthetic peptide near the center of human RLP2. The immunogen is located within amino acids 110 - 160 of RLP2.
Conjugate	Unconjugated
Tested Applications	ELISA, IF, IHC-P, WB
User Note	Optimal dilutions for each application to be determined by the researcher.

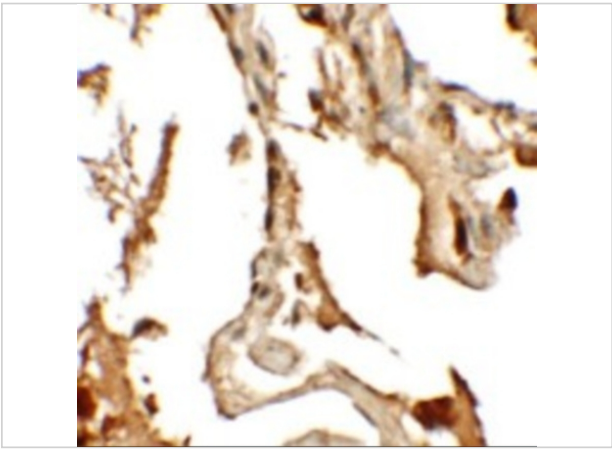
Properties

Purification	RLP2 Antibody is affinity chromatography purified via peptide column.
Clonality	Polyclonal
Isotype	IgG
Physical State	Liquid
Buffer	RLP2 Antibody is supplied in PBS containing 0.02% sodium azide.
Concentration	1 mg/mL
Storage Conditions	RLP2 antibody can be stored at 4°C for three months and -20°C, stable for up to one year. As with all antibodies care should be taken to avoid repeated freeze thaw cycles. Antibodies should not be exposed to prolonged high temperatures.



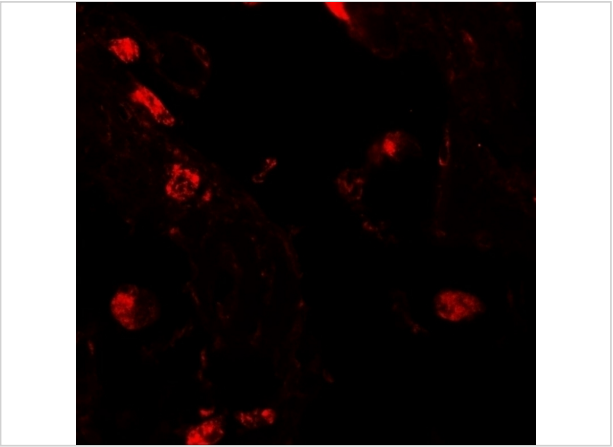
RLP2 Antibody 1

Western blot analysis of RLP2 in A549 cell lysate with RLP2 antibody at (A) 1 and (B) 2 $\mu\text{g/mL}$.



RLP2 Antibody 2

Immunohistochemistry of RLP2 in human lung tissue with RLP2 antibody at 2.5 $\mu\text{g/mL}$.



RLP2 Antibody 3

Immunofluorescence of RLP2 in human lung tissue with RLP2 antibody at 20 $\mu\text{g/mL}$.

Disclaimer

Disclaimer	Optimal dilutions/concentrations should be determined by the end user. The information provided is a guideline for product use. This product is for research use only.
-------------------	--

For research use only. For additional information, visit ProSci's [Terms and Conditions Page](#).