

CTRP2 Antibody

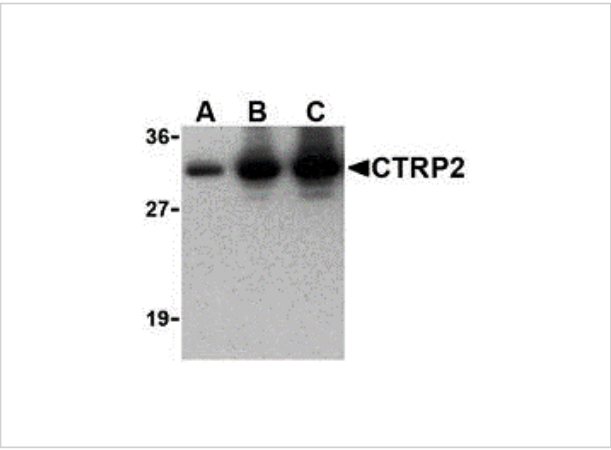
CATALOG NUMBER: 3671

Specifications

Host Species	Rabbit
Species Reactivity	Human, Mouse, Rat
Immunogen	CTRP2 antibody was raised against recombinant human CTRP2.
Conjugate	Unconjugated
Tested Applications	ELISA, ICC, IF, WB
User Note	Optimal dilutions for each application to be determined by the researcher.
Specificity	These proteins are often highly modified post-translationally and migrate in SDS-PAGE at positions other than their predicted size.

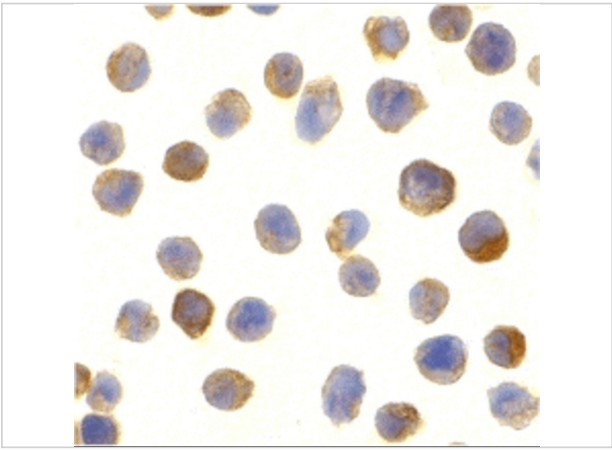
Properties

Purification	CTRP2 Antibody is affinity chromatography purified via peptide column.
Clonality	Polyclonal
Isotype	IgG
Physical State	Liquid
Buffer	CTRP2 Antibody is supplied in PBS containing 0.02% sodium azide.
Concentration	1 mg/mL
Storage Conditions	CTRP2 antibody can be stored at 4°C for three months and -20°C, stable for up to one year. As with all antibodies care should be taken to avoid repeated freeze thaw cycles. Antibodies should not be exposed to prolonged high temperatures.



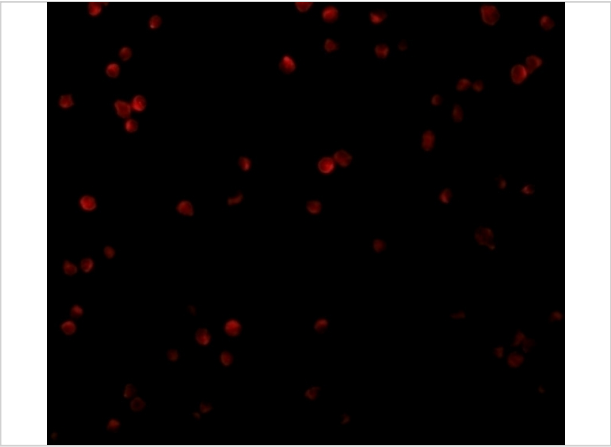
CTRP2 Antibody 1

Western blot of recombinant CTRP2: (A) 5 ng, (B) 25 ng, and (C) 50 ng with CTRP2 at 1 µg/mL.



CTRP2 Antibody 2

Immunocytochemistry of CTRP2 in Jurkat cells with CTRP2 antibody at 10 µg/mL.



CTRP2 Antibody 3

Immunofluorescence of CTRP2 in Jurkat cells with CTRP2 antibody at 20 µg/mL.

Disclaimer

Disclaimer	Optimal dilutions/concentrations should be determined by the end user. The information provided is a guideline for product use. This product is for research use only.
------------	------------------------------------------------------------------------------------------------------------------------------------------------------------------------

For research use only. For additional information, visit ProSci's [Terms and Conditions Page](#).