

GZF1 Antibody

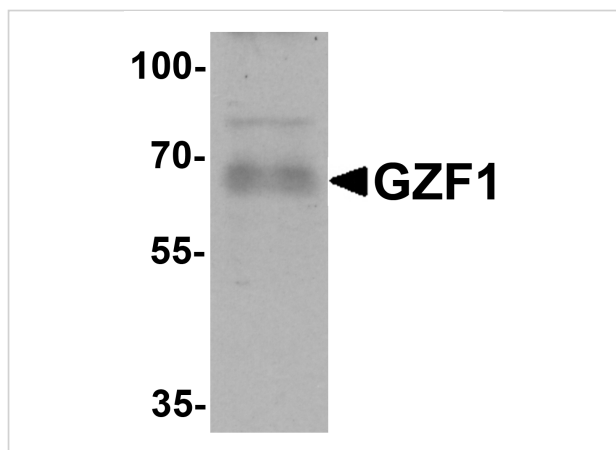
CATALOG NUMBER: 6793

Specifications

Host Species	Rabbit
Species Reactivity	Human
Homology	Predicted species reactivity based on immunogen sequence: Mouse: (89%), Rat: (89%)
Immunogen	GZF1 antibody was raised against an 18 amino acid synthetic peptide near the carboxy terminus of human GZF1. The immunogen is located within amino acids 600 - 650 of GZF1.
Conjugate	Unconjugated
Tested Applications	ELISA, IF, IHC-P, WB
User Note	Optimal dilutions for each application to be determined by the researcher.
Specificity	GZF1 antibody is human specific. At least four isoforms of GZF1 are known to exist.

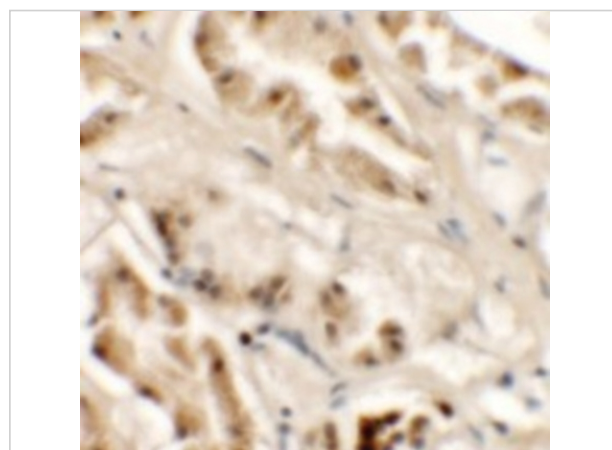
Properties

Purification	GZF1 Antibody is affinity chromatography purified via peptide column.
Clonality	Polyclonal
Isotype	IgG
Physical State	Liquid
Buffer	GZF1 Antibody is supplied in PBS containing 0.02% sodium azide.
Concentration	1 mg/mL
Storage Conditions	GZF1 antibody can be stored at 4°C for three months and -20°C, stable for up to one year. As with all antibodies care should be taken to avoid repeated freeze thaw cycles. Antibodies should not be exposed to prolonged high temperatures.



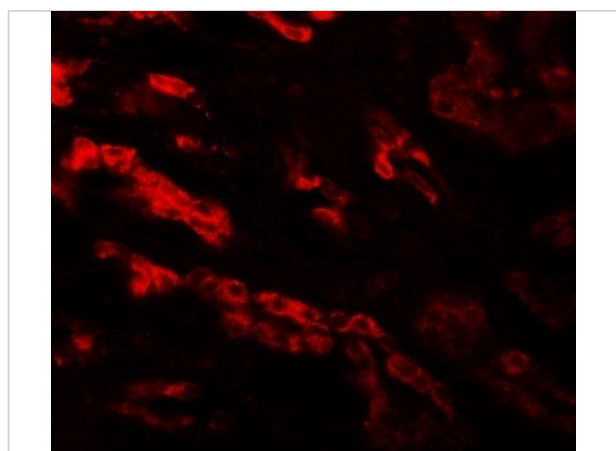
GZF1 Antibody 1

Western blot analysis of GZF1 in human heart tissue lysate with GZF1 antibody at 1 µg/mL.



GZF1 Antibody 2

Immunohistochemistry of GZF1 in human kidney tissue with GZF1 antibody at 2.5 µg/mL.



GZF1 Antibody 3

Immunofluorescence of GZF1 in human kidney tissue with GZF1 antibody at 20 µg/mL.

Disclaimer

Disclaimer

Optimal dilutions/concentrations should be determined by the end user. The information provided is a guideline for product use. This product is for research use only.

For research use only. For additional information, visit ProSci's [Terms and Conditions Page](#).