

## NCLN Antibody

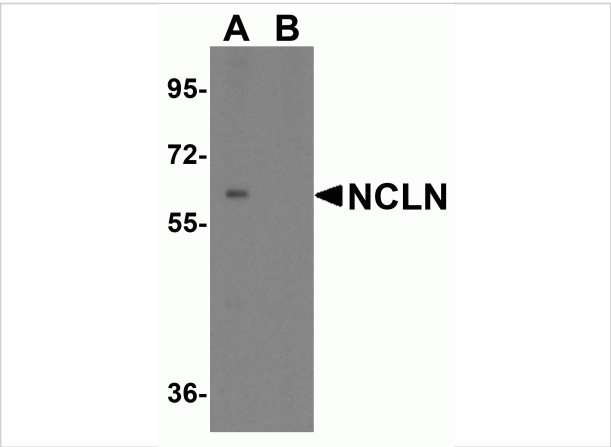
CATALOG NUMBER: 6789

### Specifications

Host Species	Rabbit
Species Reactivity	Human, Mouse, Rat
Immunogen	NCLN antibody was raised against an 18 amino acid synthetic peptide near the carboxy terminus of human NCLN. The immunogen is located within amino acids 390 - 440 of NCLN.
Conjugate	Unconjugated
Tested Applications	ELISA, IF, IHC-P, WB
User Note	Optimal dilutions for each application to be determined by the researcher.

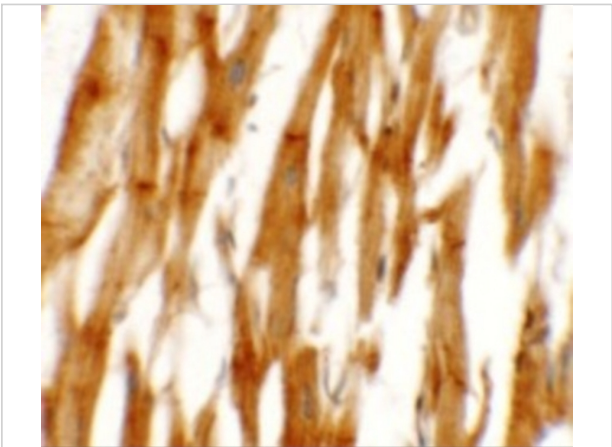
### Properties

Purification	NCLN Antibody is affinity chromatography purified via peptide column.
Clonality	Polyclonal
Isotype	IgG
Physical State	Liquid
Buffer	NCLN Antibody is supplied in PBS containing 0.02% sodium azide.
Concentration	1 mg/mL
Storage Conditions	NCLN antibody can be stored at 4°C for three months and -20°C, stable for up to one year. As with all antibodies care should be taken to avoid repeated freeze thaw cycles. Antibodies should not be exposed to prolonged high temperatures.



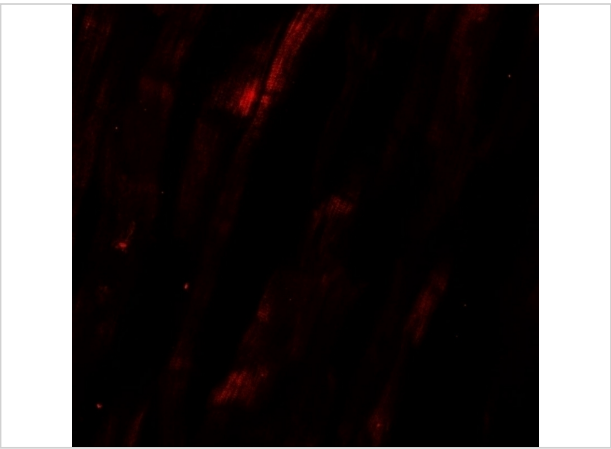
NCLN Antibody 1

Western blot analysis of NCLN in mouse heart tissue lysate with NCLN antibody at 0.5 µg/mL in (A) the absence and (B) the presence of blocking peptide.



NCLN Antibody 2

Immunohistochemistry of NCLN in human heart tissue with NCLN antibody at 2.5 µg/mL.



NCLN Antibody 3

Immunofluorescence of NCLN in human heart tissue with NCLN antibody at 20 µg/mL.

Disclaimer

Disclaimer	Optimal dilutions/concentrations should be determined by the end user. The information provided is a guideline for product use. This product is for research use only.
------------	--

For research use only. For additional information, visit ProSci's [Terms and Conditions Page](#).