

BAP29 Antibody

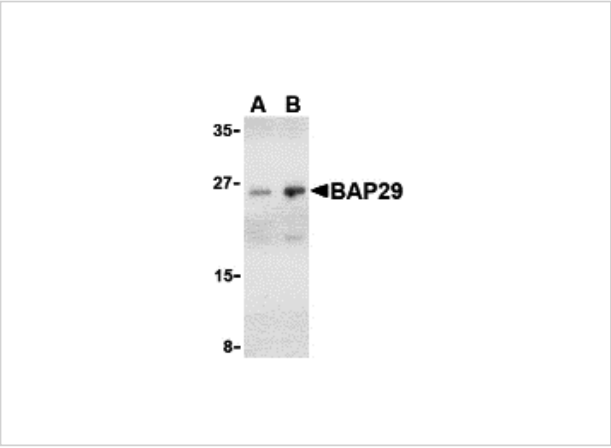
CATALOG NUMBER: 3669

Specifications

Host Species	Rabbit
Species Reactivity	Human, Mouse, Rat
Immunogen	BAP29 antibody was raised against a 17 amino acid synthetic peptide from near the center of human Bap29. Bap29 antibody is specific for isoform a of Bap29. The immunogen is located within amino acids 230 - 280 of BAP29.
Conjugate	Unconjugated
Tested Applications	ELISA, WB
User Note	Optimal dilutions for each application to be determined by the researcher.

Properties

Purification	BAP29 Antibody is affinity chromatography purified via peptide column.
Clonality	Polyclonal
Isotype	IgG
Physical State	Liquid
Buffer	BAP29 Antibody is supplied in PBS containing 0.02% sodium azide.
Concentration	1 mg/mL
Storage Conditions	BAP29 antibody can be stored at 4°C for three months and -20°C, stable for up to one year. As with all antibodies care should be taken to avoid repeated freeze thaw cycles. Antibodies should not be exposed to prolonged high temperatures.



BAP29 Antibody 1

Western blot analysis of Bap29 in human heart tissue lysate with Bap29 antibody at (A) 1 and (B) 2 $\mu\text{g/mL}$.

Disclaimer

Disclaimer	Optimal dilutions/concentrations should be determined by the end user. The information provided is a guideline for product use. This product is for research use only.
------------	--

For research use only. For additional information, visit ProSci's [Terms and Conditions Page](#).