



ProSci Incorporated  
12170 Flint Place  
Poway, CA 92064, USA  
prosci-inc.com

P: +1 (888) 513-9525  
Local: +1 (858) 513-2638  
Fax: +1 (858) 513-2692

customercare@prosci-inc.com  
techsupport@prosci-inc.com

## YPEL4 Antibody

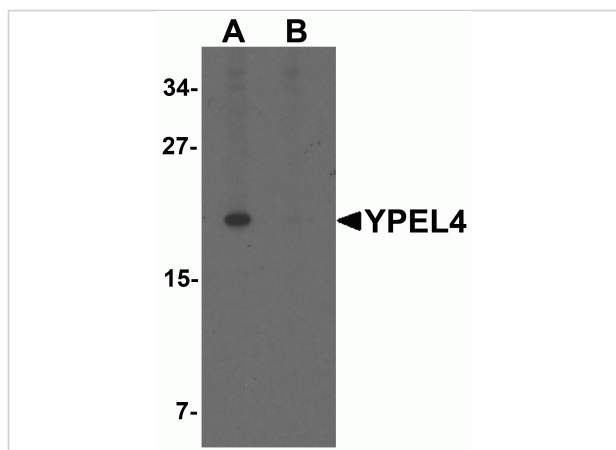
CATALOG NUMBER: 6777

### Specifications

Host Species	Rabbit
Species Reactivity	Human, Mouse
Homology	Predicted species reactivity based on immunogen sequence: Rat: (100%)
Immunogen	YPEL4 antibody was raised against a 12 amino acid synthetic peptide near the amino terminus of human YPEL4. The immunogen is located within the first 50 amino acids of YPEL4.
Conjugate	Unconjugated
Tested Applications	ELISA, ICC, IF, WB
User Note	Optimal dilutions for each application to be determined by the researcher.

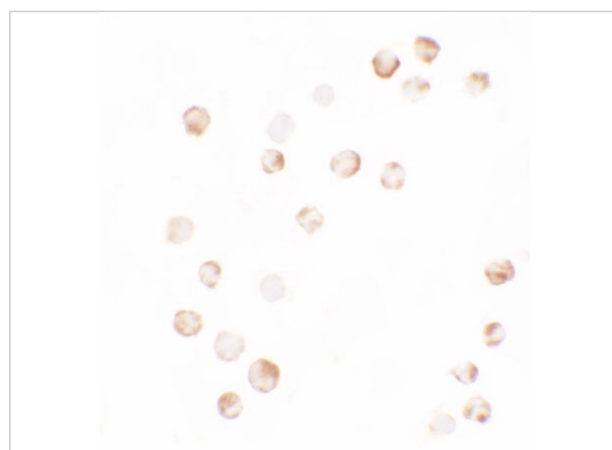
### Properties

Purification	YPEL4 Antibody is affinity chromatography purified via peptide column.
Clonality	Polyclonal
Isotype	IgG
Physical State	Liquid
Buffer	YPEL4 Antibody is supplied in PBS containing 0.02% sodium azide.
Concentration	1 mg/mL
Storage Conditions	YPEL4 antibody can be stored at 4°C for three months and -20°C, stable for up to one year. As with all antibodies care should be taken to avoid repeated freeze thaw cycles. Antibodies should not be exposed to prolonged high temperatures.



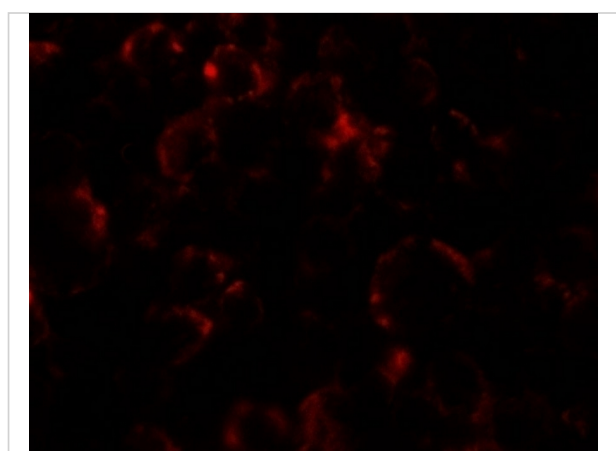
### YPEL4 Antibody 1

Western blot analysis of YPEL4 in SW480 cell lysate with YPEL4 antibody at 1 µg/mL in (A) the absence and (B) the presence of blocking peptide.



### YPEL4 Antibody 2

Immunocytochemistry of YPEL4 in SW480 cells with YPEL4 antibody at 2.5 µg/mL.



### YPEL4 Antibody 3

Immunofluorescence of YPEL4 in SW480 cells with YPEL4 antibody at 5 µg/mL.

## Disclaimer

#### Disclaimer

Optimal dilutions/concentrations should be determined by the end user. The information provided is a guideline for product use. This product is for research use only.

For research use only. For additional information, visit ProSci's [Terms and Conditions Page](#).