

YPEL3 Antibody

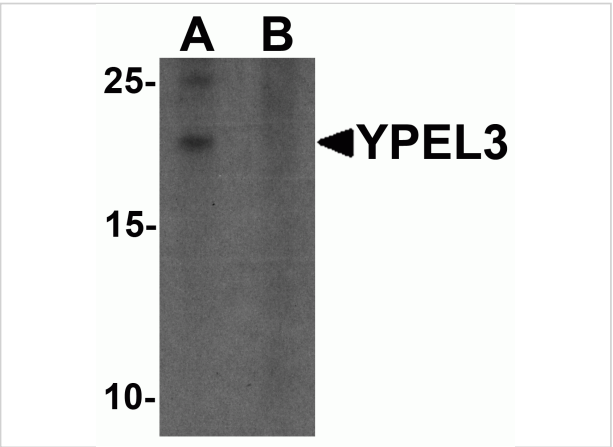
CATALOG NUMBER: 6775

Specifications

Host Species	Rabbit
Species Reactivity	Human, Mouse, Rat
Homology	Predicted species reactivity based on immunogen sequence: Bovine: (100%)
Immunogen	YPEL3 antibody was raised against a 15 amino acid synthetic peptide near the amino terminus of human YPEL3. The immunogen is located within amino acids 20 - 70 of YPEL3.
Conjugate	Unconjugated
Tested Applications	ELISA, ICC, IF, WB
User Note	Optimal dilutions for each application to be determined by the researcher.

Properties

Purification	YPEL3 Antibody is affinity chromatography purified via peptide column.
Clonality	Polyclonal
Isotype	IgG
Physical State	Liquid
Buffer	YPEL3 Antibody is supplied in PBS containing 0.02% sodium azide.
Concentration	1 mg/mL
Storage Conditions	YPEL3 antibody can be stored at 4°C for three months and -20°C, stable for up to one year. As with all antibodies care should be taken to avoid repeated freeze thaw cycles. Antibodies should not be exposed to prolonged high temperatures.



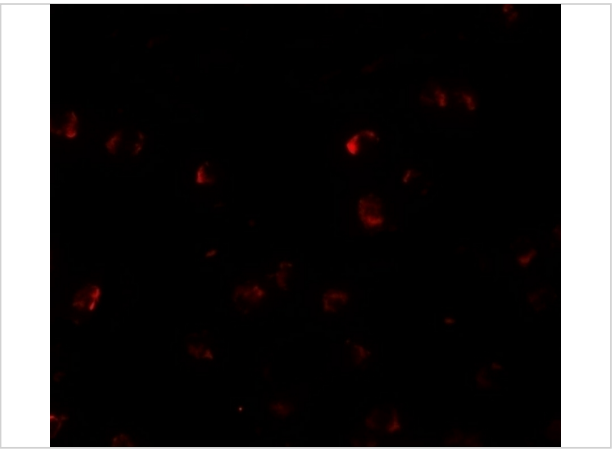
YPEL3 Antibody 1

Western blot analysis of YPEL3 in A-20 cell lysate with YPEL3 antibody at 1 µg/mL in (A) the absence and (B) the presence of blocking peptide



YPEL3 Antibody 2

Immunocytochemistry of YPEL3 in A20 cells with YPEL3 antibody at 2.5 µg/mL.



YPEL3 Antibody 3

Immunofluorescence of YPEL3 in A20 cells with YPEL3 antibody at 5 µg/mL.

Disclaimer

Disclaimer	Optimal dilutions/concentrations should be determined by the end user. The information provided is a guideline for product use. This product is for research use only.
------------	--

For research use only. For additional information, visit ProSci's [Terms and Conditions Page](#).