

## SIGLEC15 Antibody

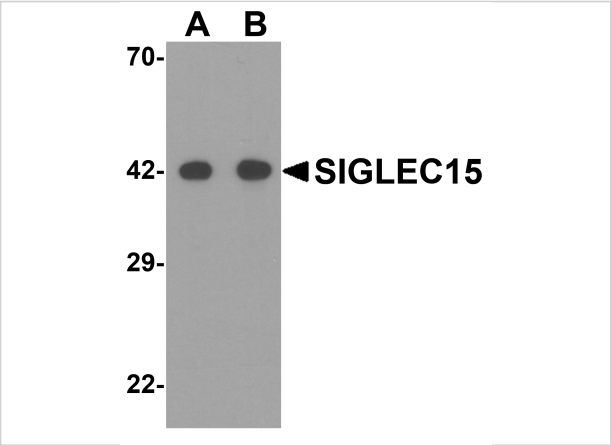
CATALOG NUMBER: 6765

### Specifications

Host Species	Rabbit
Species Reactivity	Human, Mouse, Rat
Immunogen	SIGLEC15 antibody was raised against a 15 amino acid synthetic peptide near the amino terminus of human SIGLEC15. The immunogen is located within amino acids 50 - 100 of SIGLEC15.
Conjugate	Unconjugated
Tested Applications	ELISA, IHC-P, WB
User Note	Optimal dilutions for each application to be determined by the researcher.
Specificity	SIGLEC15 antibody is predicted to not cross-react with other SIGLEC family members.
Predicted Molecular Weight	Predicted: 36 kDa Observed: 42 kDa

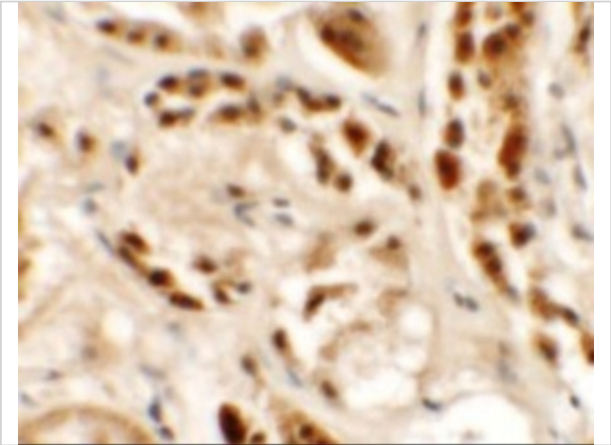
### Properties

Purification	SIGLEC15 Antibody is affinity chromatography purified via peptide column.
Clonality	Polyclonal
Isotype	IgG
Physical State	Liquid
Buffer	SIGLEC15 Antibody is supplied in PBS containing 0.02% sodium azide.
Concentration	1 mg/mL
Storage Conditions	SIGLEC15 antibody can be stored at 4°C for three months and -20°C, stable for up to one year. As with all antibodies care should be taken to avoid repeated freeze thaw cycles. Antibodies should not be exposed to prolonged high temperatures.



SIGLEC15 Antibody 1

Western blot analysis of SIGLEC15 in human kidney tissue lysate with SIGLEC15 antibody at (A) 1 and (B) 2 µg/mL.



SIGLEC15 Antibody 2

Immunohistochemistry of SIGLEC15 in human kidney tissue with SIGLEC15 antibody at 2.5 µg/mL.

Disclaimer

Disclaimer	Optimal dilutions/concentrations should be determined by the end user. The information provided is a guideline for product use. This product is for research use only.
------------	--

For research use only. For additional information, visit ProSci's [Terms and Conditions Page](#).