

RNASET2 Antibody

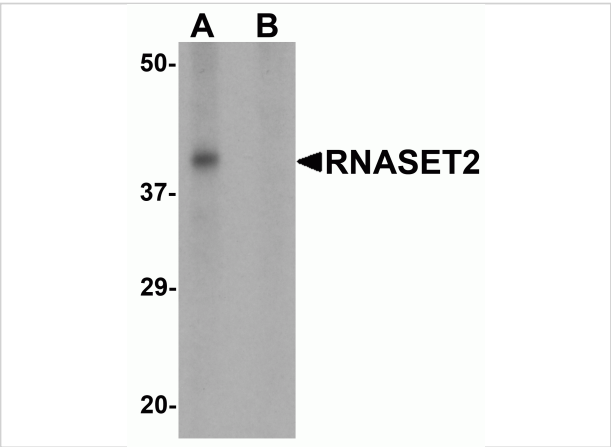
CATALOG NUMBER: 6763

Specifications

Host Species	Rabbit
Species Reactivity	Human, Mouse, Rat
Homology	Predicted species reactivity based on immunogen sequence: Pig: (100%)
Immunogen	RNASET2 antibody was raised against a 16 amino acid synthetic peptide near the carboxy terminus of human RNASET2. The immunogen is located within the last 50 amino acids of RNASET2.
Conjugate	Unconjugated
Tested Applications	ELISA, ICC, IF, WB
User Note	Optimal dilutions for each application to be determined by the researcher.

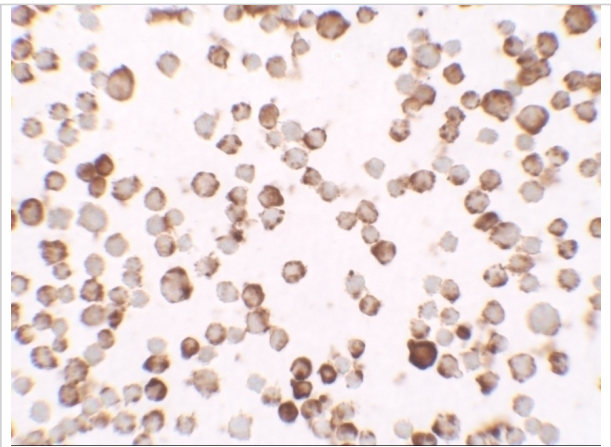
Properties

Purification	RNASET2 Antibody is affinity chromatography purified via peptide column.
Clonality	Polyclonal
Isotype	IgG
Physical State	Liquid
Buffer	RNASET2 Antibody is supplied in PBS containing 0.02% sodium azide.
Concentration	1 mg/mL
Storage Conditions	RNASET2 antibody can be stored at 4°C for three months and -20°C, stable for up to one year. As with all antibodies care should be taken to avoid repeated freeze thaw cycles. Antibodies should not be exposed to prolonged high temperatures.



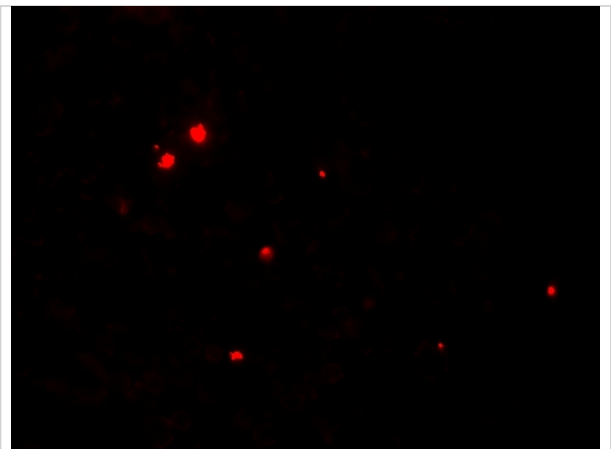
RNASET2 Antibody 1

Western blot analysis of RNASET2 in SW480 cell lysate with RNASET2 antibody at 1 µg/mL in (A) the absence and (B) the presence of blocking peptide.



RNASET2 Antibody 2

Immunocytochemistry of RNASET2 in SW480 cells with RNASET2 antibody at 2.5 µg/mL.



RNASET2 Antibody 3

Immunofluorescence of RNASET2 in SW480 cells with RNASET2 antibody at 5 µg/mL.

Disclaimer

Disclaimer	Optimal dilutions/concentrations should be determined by the end user. The information provided is a guideline for product use. This product is for research use only.
------------	--

For research use only. For additional information, visit ProSci's [Terms and Conditions Page](#).