

FOXRED2 Antibody

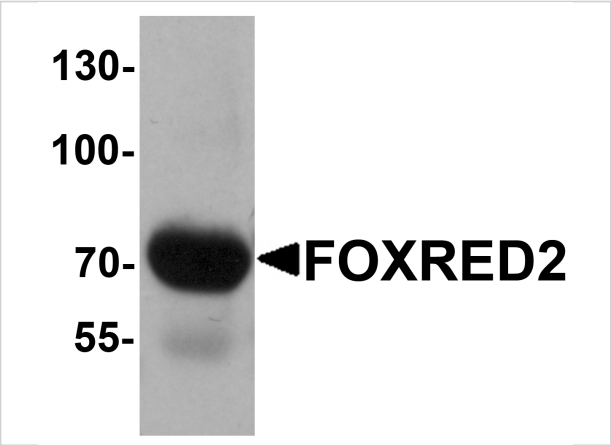
CATALOG NUMBER: 6761

Specifications

Host Species	Rabbit
Species Reactivity	Human
Homology	Predicted species reactivity based on immunogen sequence: Mouse: (94%)
Immunogen	FOXRED2 antibody was raised against a 17 amino acid synthetic peptide near the amino terminus of human FOXRED2. The immunogen is located within amino acids 70 - 120 of FOXRED2.
Conjugate	Unconjugated
Tested Applications	ELISA, IF, WB
User Note	Optimal dilutions for each application to be determined by the researcher.

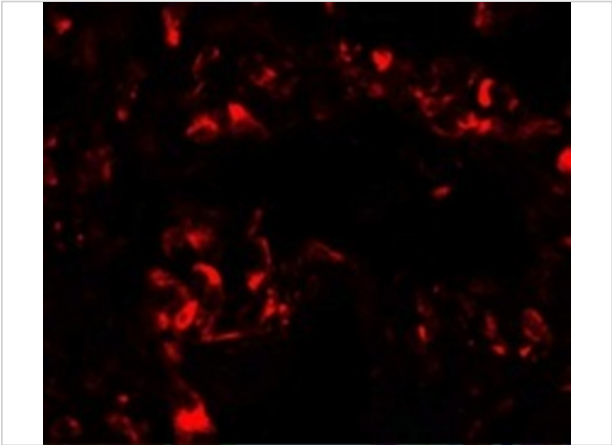
Properties

Purification	FOXRED2 Antibody is affinity chromatography purified via peptide column.
Clonality	Polyclonal
Isotype	IgG
Physical State	Liquid
Buffer	FOXRED2 Antibody is supplied in PBS containing 0.02% sodium azide.
Concentration	1 mg/mL
Storage Conditions	FOXRED2 antibody can be stored at 4°C for three months and -20°C, stable for up to one year. As with all antibodies care should be taken to avoid repeated freeze thaw cycles. Antibodies should not be exposed to prolonged high temperatures.



FOXRED2 Antibody 1

Western blot analysis of FOXRED2 in human lung tissue lysate with FOXRED2 antibody at 1 µg/mL.



FOXRED2 Antibody 2

Immunofluorescence of FOXRED2 in human lung cells with FOXRED2 antibody at 20 µg/mL.

Disclaimer

Disclaimer	Optimal dilutions/concentrations should be determined by the end user. The information provided is a guideline for product use. This product is for research use only.
------------	--

For research use only. For additional information, visit ProSci's [Terms and Conditions Page](#).