

## BAP31 Antibody

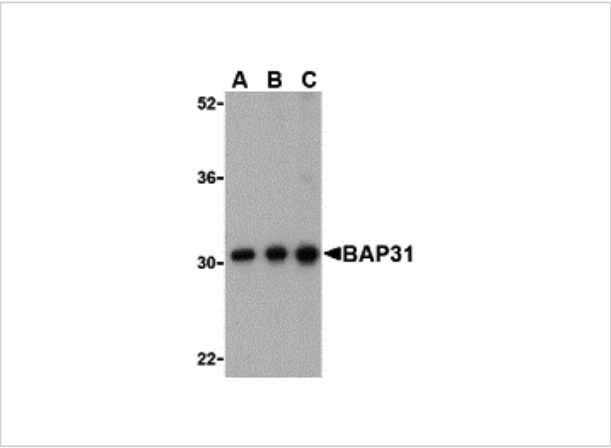
CATALOG NUMBER: 3665

### Specifications

Host Species	Rabbit
Species Reactivity	Human, Mouse, Rat
Immunogen	Anti-BAP31 antibody ( <b>3665</b> ) was raised against a peptide corresponding to 17 amino acids near the carboxy terminus of human BAP31. The immunogen is located within the last 50 amino acids of BAP31.
Conjugate	Unconjugated
Tested Applications	ELISA, IHC-P, WB
User Note	Optimal dilutions for each application to be determined by the researcher.
Predicted Molecular Weight	Predicted: 28kD Observed: 28kD

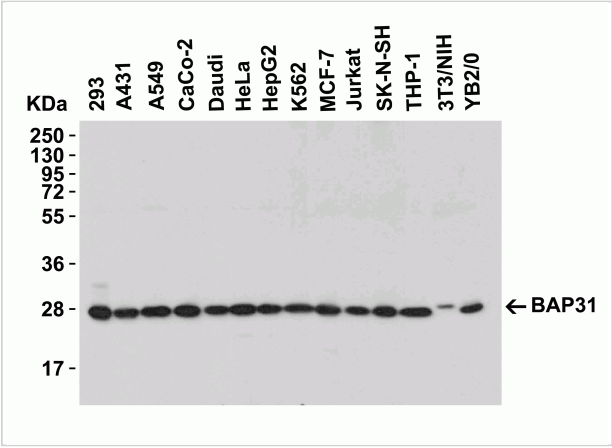
### Properties

Purification	BAP31 Antibody is affinity chromatography purified via peptide column.
Clonality	Polyclonal
Isotype	IgG
Physical State	Liquid
Buffer	BAP31 Antibody is supplied in PBS containing 0.02% sodium azide.
Concentration	1 mg/mL
Storage Conditions	BAP31 antibody can be stored at 4°C for three months and -20°C, stable for up to one year. As with all antibodies care should be taken to avoid repeated freeze thaw cycles. Antibodies should not be exposed to prolonged high temperatures.



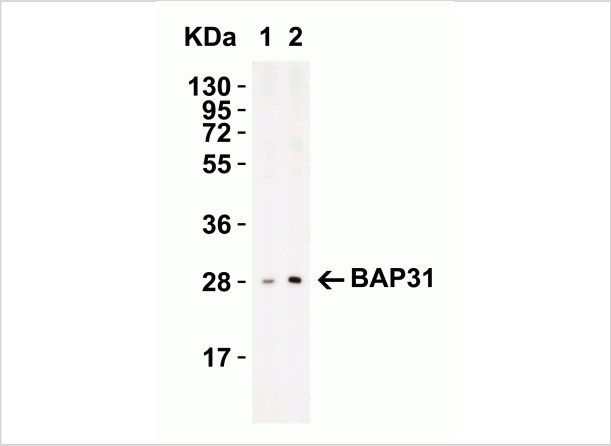
### BAP31 Antibody 1

**Figure 1 Western Blot Validation in Ramos Cell Lysate**  
 Loading: 15 µg of lysates per lane. Antibodies: BAP31, 3665 (A: 0.5 µg/mL, B: 1 µg/mL and C: 2 µg/mL), 1h incubation at RT i...



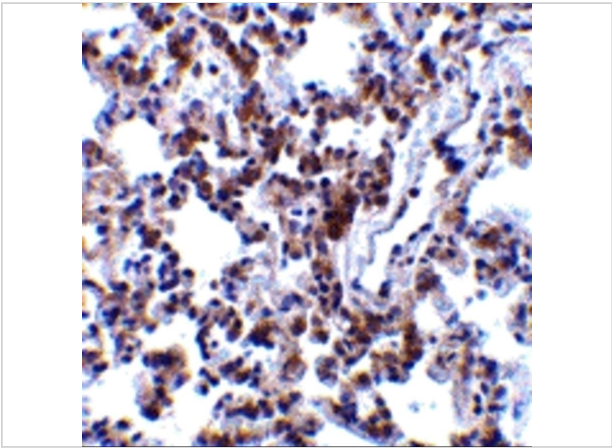
### BAP31 Antibody 2

**Figure 2 Western Blot Validation in Human, Mouse and Rat Cell Lines**  
 Loading: 15 µg of lysates per lane. Antibodies: BAP31, 3665 (0.5 µg/mL), 1h incubation at RT in 5% NFDN/TBST.S...



### BAP31 Antibody 3

**Figure 3 Western Blot Validation in Rat Lung Tissue Lysate**  
 Loading: 15 µg of lysates per lane. Antibodies: BAP31, 3665 (Lane 1: 1 µg/mL and Lane 2: 2 µg/mL), 1h incubation at RT ...



### BAP31 Antibody 4

**Figure 4 Immunohistochemistry Validation of BAP31 in Rat Lung Tissue**  
 Immunohistochemical analysis of paraffin-embedded rat lung tissue using anti-BAP31 antibody (3665) at 2 µg...

## Disclaimer

<b>Disclaimer</b>	Optimal dilutions/concentrations should be determined by the end user. The information provided is a guideline for product use. This product is for research use only.
-------------------	------------------------------------------------------------------------------------------------------------------------------------------------------------------------

For research use only. For additional information, visit ProSci's [Terms and Conditions Page](#).