

NKX2-4 Antibody

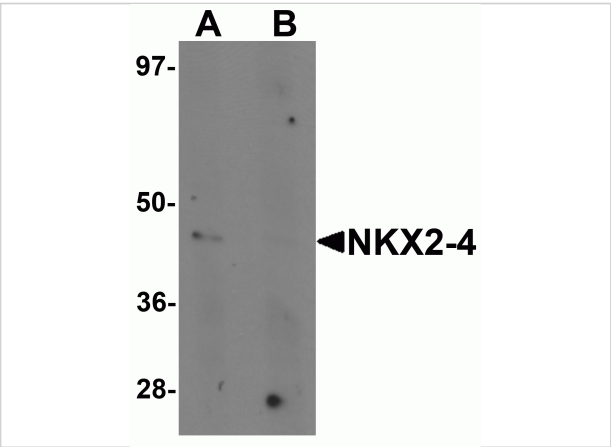
CATALOG NUMBER: 6747

Specifications

Host Species	Rabbit
Species Reactivity	Human, Mouse
Homology	Predicted species reactivity based on immunogen sequence: Guinea pig: (100%), Rat: (86%), Chicken: (86%), Bovine: (71%)
Immunogen	NKX2-4 antibody was raised against an 18 amino acid synthetic peptide near the center of human NKX2-4. The immunogen is located within amino acids 220 - 270 of NKX2-4.
Conjugate	Unconjugated
Tested Applications	ELISA, ICC, IF, WB
User Note	Optimal dilutions for each application to be determined by the researcher.
Specificity	NKX2-4 antibody is predicted to not cross-react with other NK2 homeobox family members. At least two isoforms of NKX2-4 are known to exist; this antibody will detect both isoforms.

Properties

Purification	NKX2-4 Antibody is affinity chromatography purified via peptide column.
Clonality	Polyclonal
Isotype	IgG
Physical State	Liquid
Buffer	NKX2-4 Antibody is supplied in PBS containing 0.02% sodium azide.
Concentration	1 mg/mL
Storage Conditions	NKX2-4 antibody can be stored at 4°C for three months and -20°C, stable for up to one year. As with all antibodies care should be taken to avoid repeated freeze thaw cycles. Antibodies should not be exposed to prolonged high temperatures.



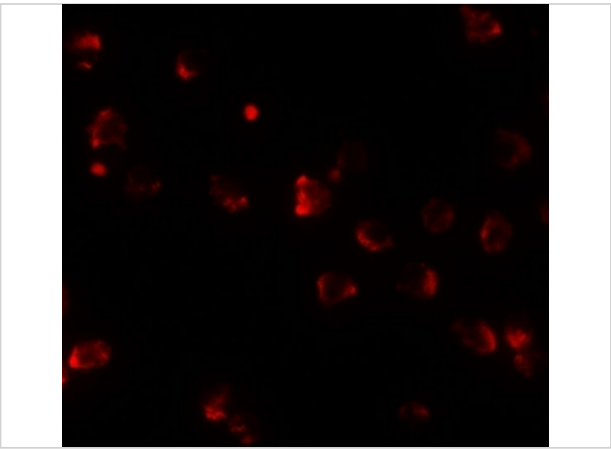
NKX2-4 Antibody 1

Western blot analysis of NKX2-4 in A20 cell lysate with NKX2-4 antibody at 1 µg/mL in (A) the absence and (B) the presence of blocking peptide.



NKX2-4 Antibody 2

Immunocytochemistry of NKX2-4 in A20 cells with NKX2-4 antibody at 2.5 µg/mL.



NKX2-4 Antibody 3

Immunofluorescence of NKX2-4 in A20 cells with NKX2-4 antibody at 20 µg/mL.

Disclaimer

Disclaimer	Optimal dilutions/concentrations should be determined by the end user. The information provided is a guideline for product use. This product is for research use only.
------------	--

For research use only. For additional information, visit ProSci's [Terms and Conditions Page](#).