

## NKX2-2 Antibody

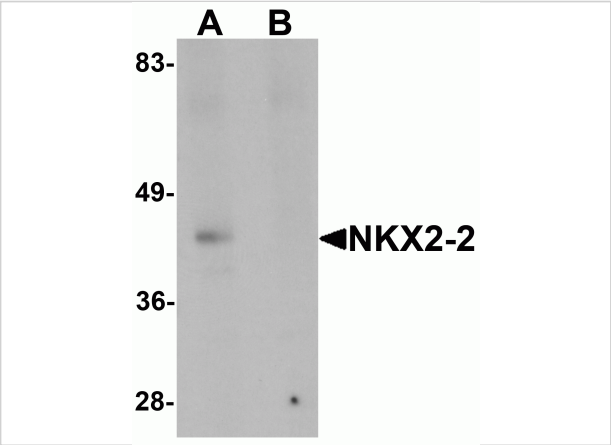
CATALOG NUMBER: 6743

### Specifications

Host Species	Rabbit
Species Reactivity	Human, Mouse, Rat
Immunogen	NKX2-2 antibody was raised against a 19 amino acid synthetic peptide near the center of human NKX2-2. The immunogen is located within amino acids 90 - 140 of NKX2-2.
Conjugate	Unconjugated
Tested Applications	ELISA, IF, IHC-P, WB
User Note	Optimal dilutions for each application to be determined by the researcher.
Specificity	NKX2-2 antibody is predicted to not cross-react with other NK2 homeobox family members.

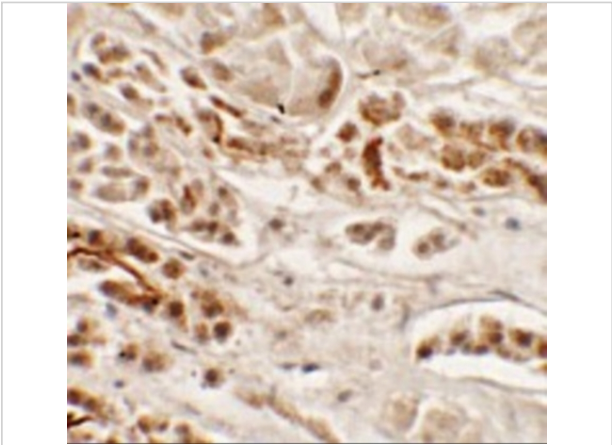
### Properties

Purification	NKX2-2 Antibody is affinity chromatography purified via peptide column.
Clonality	Polyclonal
Isotype	IgG
Physical State	Liquid
Buffer	NKX2-2 Antibody is supplied in PBS containing 0.02% sodium azide.
Concentration	1 mg/mL
Storage Conditions	NKX2-2 antibody can be stored at 4°C for three months and -20°C, stable for up to one year. As with all antibodies care should be taken to avoid repeated freeze thaw cycles. Antibodies should not be exposed to prolonged high temperatures.



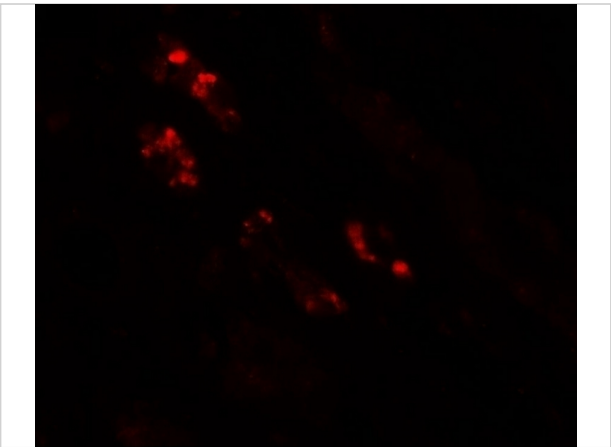
NKX2-2 Antibody 1

Western blot analysis of NKX2-2 in rat kidney tissue lysate with NKX2-2 antibody at 1 µg/mL in (A) the absence and (B) the presence of blocking peptide.



NKX2-2 Antibody 2

Immunohistochemistry of NKX2-2 in human kidney tissue with NKX2-2 antibody at 2.5 µg/mL.



NKX2-2 Antibody 3

Immunofluorescence of NKX2-2 in human kidney tissue with NKX2-2 antibody at 20 µg/mL.

Disclaimer

Disclaimer	Optimal dilutions/concentrations should be determined by the end user. The information provided is a guideline for product use. This product is for research use only.
------------	--

For research use only. For additional information, visit ProSci's [Terms and Conditions Page](#).