



ProSci Incorporated
12170 Flint Place
Poway, CA 92064, USA
prosci-inc.com

P: +1 (888) 513-9525
Local: +1 (858) 513-2638
Fax: +1 (858) 513-2692

customercare@prosci-inc.com
techsupport@prosci-inc.com

PIERCE1 Antibody

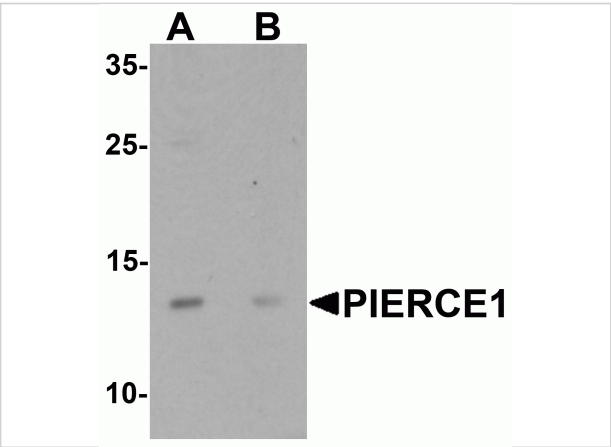
CATALOG NUMBER: 6721

Specifications

Host Species	Rabbit
Species Reactivity	Human, Mouse
Immunogen	PIERCE1 antibody was raised against a 16 amino acid synthetic peptide near the amino terminus of human PIERCE1. The immunogen is located within the first 50 amino acids of PIERCE1.
Conjugate	Unconjugated
Tested Applications	ELISA, ICC, WB
User Note	Optimal dilutions for each application to be determined by the researcher.
Specificity	PIERCE1 antibody is predicted to not cross-react with other UPF0691 family members.

Properties

Purification	PIERCE1 Antibody is affinity chromatography purified via peptide column.
Clonality	Polyclonal
Isotype	IgG
Physical State	Liquid
Buffer	PIERCE1 Antibody is supplied in PBS containing 0.02% sodium azide.
Concentration	1 mg/mL
Storage Conditions	PIERCE1 antibody can be stored at 4°C for three months and -20°C, stable for up to one year. As with all antibodies care should be taken to avoid repeated freeze thaw cycles. Antibodies should not be exposed to prolonged high temperatures.



PIERCE1 Antibody 1

Western blot analysis of PIERCE1 in A20 cell lysate with PIERCE1 antibody at 1 µg/mL in (A) the absence and (B) the presence of blocking peptide.



PIERCE1 Antibody 2

Immunocytochemistry of PIERCE1 in A20 cells with PIERCE1 antibody at 2.5 µg/mL.

Disclaimer

Disclaimer	Optimal dilutions/concentrations should be determined by the end user. The information provided is a guideline for product use. This product is for research use only.
------------	------------------------------------------------------------------------------------------------------------------------------------------------------------------------

For research use only. For additional information, visit ProSci's [Terms and Conditions Page](#).