

## B9D1 Antibody

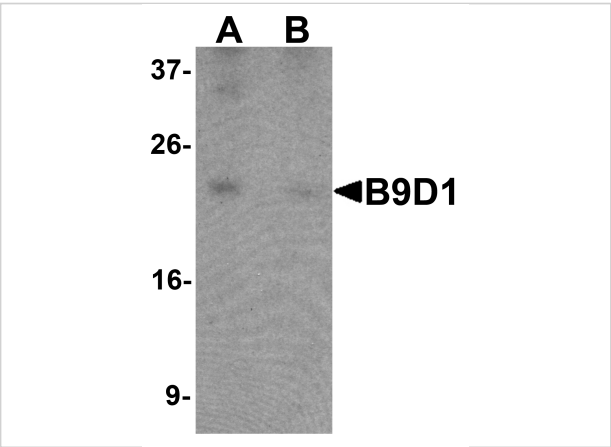
CATALOG NUMBER: 6715

### Specifications

Host Species	Rabbit
Species Reactivity	Human
Homology	Predicted species reactivity based on immunogen sequence: Rat: (100%), Mouse: (100%)
Immunogen	B9D1 antibody was raised against an 18 amino acid synthetic peptide near the carboxy terminus of human B9D1. The immunogen is located within amino acids 130 - 180 of B9D1.
Conjugate	Unconjugated
Tested Applications	ELISA, ICC, IF, WB
User Note	Optimal dilutions for each application to be determined by the researcher.
Specificity	At least two isoforms of B9D1 are known to exist; this antibody will only recognize the longest isoform. B9D1 antibody is predicted to not cross-react with other DNAJC family members.

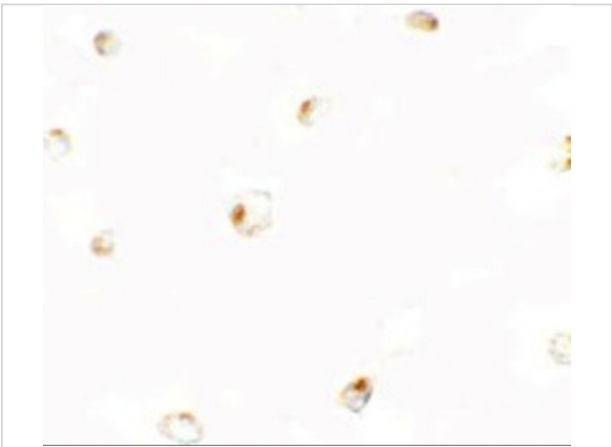
### Properties

Purification	B9D1 Antibody is affinity chromatography purified via peptide column.
Clonality	Polyclonal
Isotype	IgG
Physical State	Liquid
Buffer	B9D1 Antibody is supplied in PBS containing 0.02% sodium azide.
Concentration	1 mg/mL
Storage Conditions	B9D1 antibody can be stored at 4°C for three months and -20°C, stable for up to one year. As with all antibodies care should be taken to avoid repeated freeze thaw cycles. Antibodies should not be exposed to prolonged high temperatures.



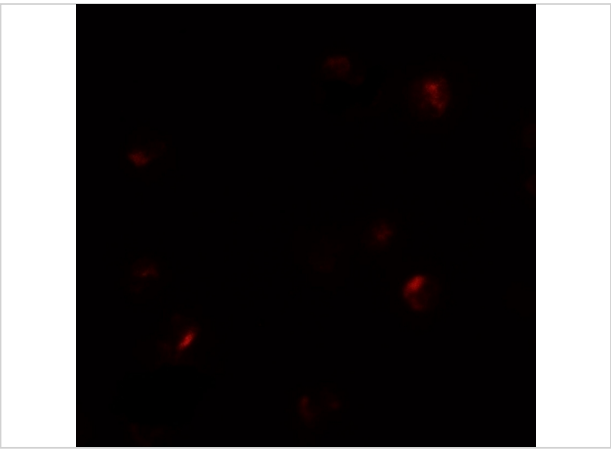
**B9D1 Antibody 1**

Western blot analysis of B9D1 in 293 cell lysate with B9D1 antibody at 1 µg/mL in (A) the absence and (B) the presence of blocking peptide.



**B9D1 Antibody 2**

Immunocytochemistry of B9D1 in 293 cells with B9D1 antibody at 5 µg/mL.



**B9D1 Antibody 3**

Immunofluorescence of B9D1 in 293 cells with B9D1 antibody at 20 µg/mL.

**Disclaimer**

<b>Disclaimer</b>	Optimal dilutions/concentrations should be determined by the end user. The information provided is a guideline for product use. This product is for research use only.
-------------------	--

For research use only. For additional information, visit ProSci's [Terms and Conditions Page](#).