

IRF2BP2 Antibody

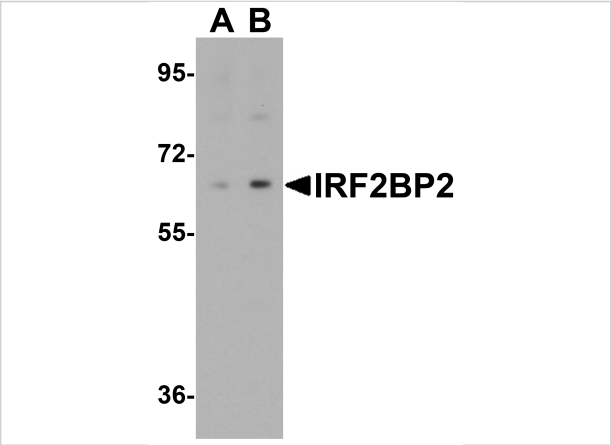
CATALOG NUMBER: 6705

Specifications

Host Species	Rabbit
Species Reactivity	Human, Mouse
Immunogen	IRF2BP2 antibody was raised against an 18 amino acid synthetic peptide near the carboxy terminus of human IRF2BP2. The immunogen is located within amino acids 440 - 490 of IRF2BP2.
Conjugate	Unconjugated
Tested Applications	ELISA, ICC, WB
User Note	Optimal dilutions for each application to be determined by the researcher.
Specificity	At least two isoforms of IRF2BP2 are known to exist; this antibody will detect both. This antibody is predicted to not cross-react with any FOXD4 protein family members.

Properties

Purification	IRF2BP2 Antibody is affinity chromatography purified via peptide column.
Clonality	Polyclonal
Isotype	IgG
Physical State	Liquid
Buffer	IRF2BP2 Antibody is supplied in PBS containing 0.02% sodium azide.
Concentration	1 mg/mL
Storage Conditions	IRF2BP2 antibody can be stored at 4°C for three months and -20°C, stable for up to one year. As with all antibodies care should be taken to avoid repeated freeze thaw cycles. Antibodies should not be exposed to prolonged high temperatures.



IRF2BP2 Antibody 1

Western blot analysis of IRF2BP2 in HeLa cell lysate with IRF2BP2 antibody at 1 µg/mL in (A) the absence and (B) the presence of blocking peptide



IRF2BP2 Antibody 2

Immunocytochemistry of IRF2BP2 in A20 cells with IRF2BP2 antibody at 2.5 µg/mL.

Disclaimer

Disclaimer	Optimal dilutions/concentrations should be determined by the end user. The information provided is a guideline for product use. This product is for research use only.
------------	--

For research use only. For additional information, visit ProSci's [Terms and Conditions Page](#).