

CASKIN2 Antibody

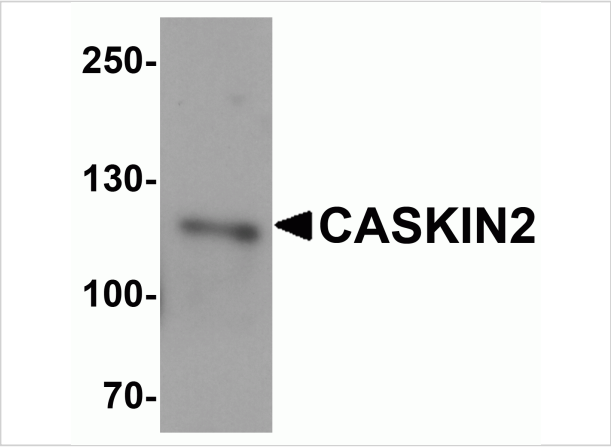
CATALOG NUMBER: 6663

Specifications

Host Species	Rabbit
Species Reactivity	Human
Homology	Predicted species reactivity based on immunogen sequence: Mouse: (100%)
Immunogen	CASKIN2 antibody was raised against a 19 amino acid synthetic peptide near the amino terminus of human CASKIN2. The immunogen is located within amino acids 380 - 430 of CASKIN2.
Conjugate	Unconjugated
Tested Applications	ELISA, ICC, IF, WB
User Note	Optimal dilutions for each application to be determined by the researcher.
Specificity	CASKIN2 antibody is predicted to not cross-react with other CASKIN family members. Three isoforms of CASKIN2 are known to exist; this antibody will not detect the shortest isoform.
Predicted Molecular Weight	Predicted: 123, 132 kDa Observed: 120 kDa

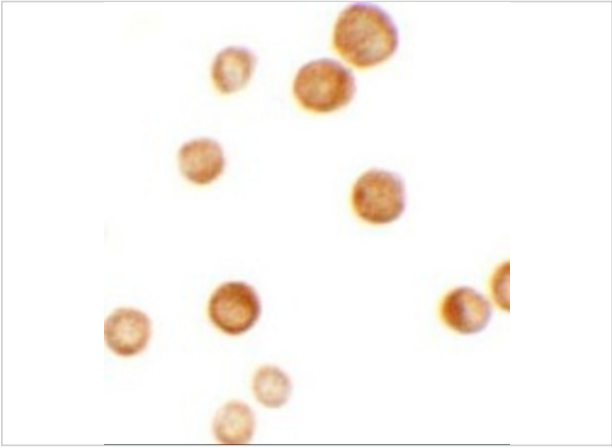
Properties

Purification	CASKIN2 Antibody is affinity chromatography purified via peptide column.
Clonality	Polyclonal
Isotype	IgG
Physical State	Liquid
Buffer	CASKIN2 Antibody is supplied in PBS containing 0.02% sodium azide.
Concentration	1 mg/mL
Storage Conditions	CASKIN2 antibody can be stored at 4°C for three months and -20°C, stable for up to one year. As with all antibodies care should be taken to avoid repeated freeze thaw cycles. Antibodies should not be exposed to prolonged high temperatures.



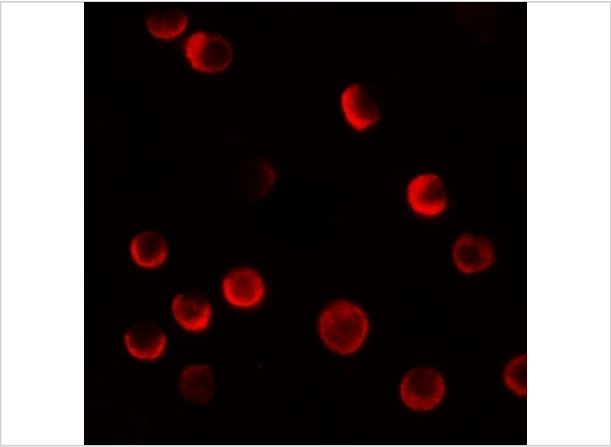
CASKIN2 Antibody 1

Western blot analysis of CASKIN2 HeLa cell tissue lysate with CASKIN2 antibody at 1 µg/mL.



CASKIN2 Antibody 2

Immunocytochemistry of CASKIN2 in HeLa cells with CASKIN2 antibody at 2.5 µg/mL.



CASKIN2 Antibody 3

Immunofluorescence of CASKIN2 in HeLa cells with CASKIN2 antibody at 20 µg/mL.

Disclaimer

Disclaimer	Optimal dilutions/concentrations should be determined by the end user. The information provided is a guideline for product use. This product is for research use only.
------------	--

For research use only. For additional information, visit ProSci's [Terms and Conditions Page](#).