

SIPA1 Antibody

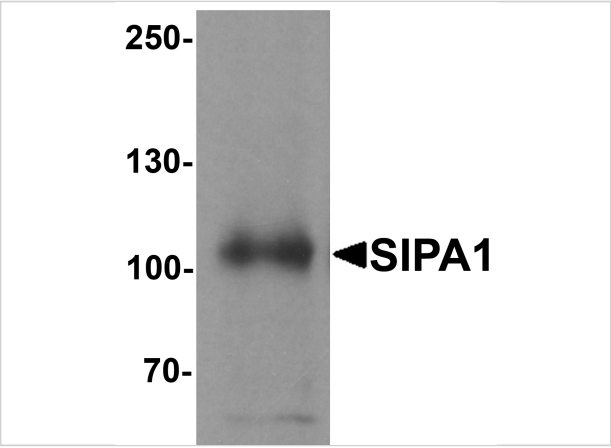
CATALOG NUMBER: 6643

Specifications

| | |
|----------------------------|--|
| Host Species | Rabbit |
| Species Reactivity | Human |
| Homology | Predicted species reactivity based on immunogen sequence: Mouse: (95%) |
| Immunogen | SIPA1 antibody was raised against a 19 amino acid synthetic peptide from near the amino terminus of human SIPA1. The immunogen is located within amino acids 40 - 90 of SIPA1. |
| Conjugate | Unconjugated |
| Tested Applications | ELISA, IF, WB |
| User Note | Optimal dilutions for each application to be determined by the researcher. |
| Specificity | At least three isoforms of SIPA1 are known to exist; this antibody will recognize all three isoforms. This antibody is specific for SIPA1 and will not recognize the other SIPA1 family of proteins. |

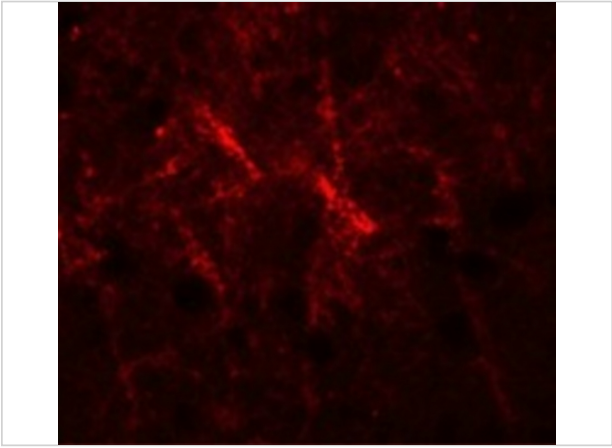
Properties

| | |
|---------------------------|---|
| Purification | SIPA1 Antibody is affinity chromatography purified via peptide column. |
| Clonality | Polyclonal |
| Isotype | IgG |
| Physical State | Liquid |
| Buffer | SIPA1 Antibody is supplied in PBS containing 0.02% sodium azide. |
| Concentration | 1 mg/mL |
| Storage Conditions | SIPA1 antibody can be stored at 4°C for three months and -20°C, stable for up to one year. As with all antibodies care should be taken to avoid repeated freeze thaw cycles. Antibodies should not be exposed to prolonged high temperatures. |



SIPA1 Antibody 1

Western blot analysis of SIPA1 in human brain tissue lysate with SIPA1 antibody at 1 µg/mL.



SIPA1 Antibody 2

Immunofluorescence of SIPA1 in human brain cells with SIPA1 antibody at 20 µg/mL.

Disclaimer

| | |
|------------|--|
| Disclaimer | Optimal dilutions/concentrations should be determined by the end user. The information provided is a guideline for product use. This product is for research use only. |
|------------|--|

For research use only. For additional information, visit ProSci's [Terms and Conditions Page](#).