

RKHD3 Antibody

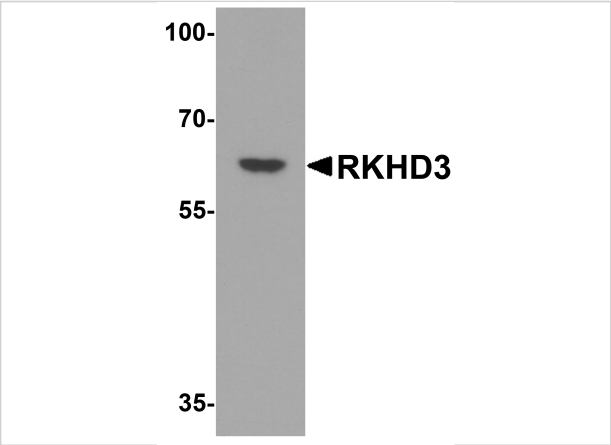
CATALOG NUMBER: 6641

Specifications

Host Species	Rabbit
Species Reactivity	Human, Mouse, Rat
Immunogen	RKHD3 antibody was raised against a 16 amino acid synthetic peptide from near the center of human RKHD3. The immunogen is located within amino acids 180 - 230 of RKHD3.
Conjugate	Unconjugated
Tested Applications	ELISA, IF, WB
User Note	Optimal dilutions for each application to be determined by the researcher.
Specificity	This antibody is specific for RKHD3 and will not recognize the other RKHD3 family of proteins.
Predicted Molecular Weight	Predicted: 62 kDa Observed: 62 kDa

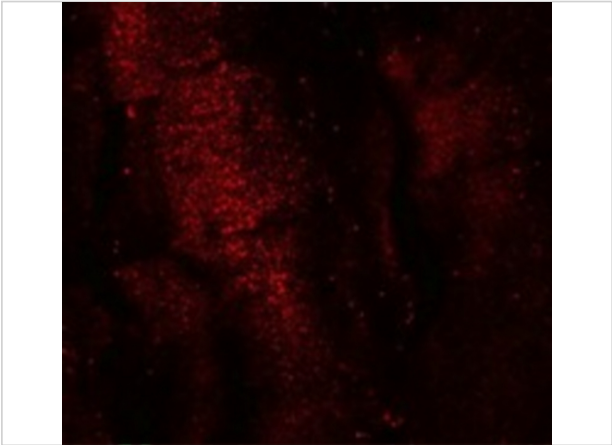
Properties

Purification	RKHD3 Antibody is affinity chromatography purified via peptide column.
Clonality	Polyclonal
Isotype	IgG
Physical State	Liquid
Buffer	RKHD3 Antibody is supplied in PBS containing 0.02% sodium azide.
Concentration	1 mg/mL
Storage Conditions	RKHD3 antibody can be stored at 4°C for three months and -20°C, stable for up to one year. As with all antibodies care should be taken to avoid repeated freeze thaw cycles. Antibodies should not be exposed to prolonged high temperatures.



RKHD3 Antibody 1

Western blot analysis of RKHD3 in human testis tissue lysate with RKHD3 antibody at 1 µg/mL.



RKHD3 Antibody 2

Immunofluorescence of RKHD3 in mouse skeletal muscle cells with RKHD3 antibody at 20 µg/mL.

Disclaimer

Disclaimer	Optimal dilutions/concentrations should be determined by the end user. The information provided is a guideline for product use. This product is for research use only.
------------	------------------------------------------------------------------------------------------------------------------------------------------------------------------------

For research use only. For additional information, visit ProSci's [Terms and Conditions Page](#).