

## SPATA18 Antibody

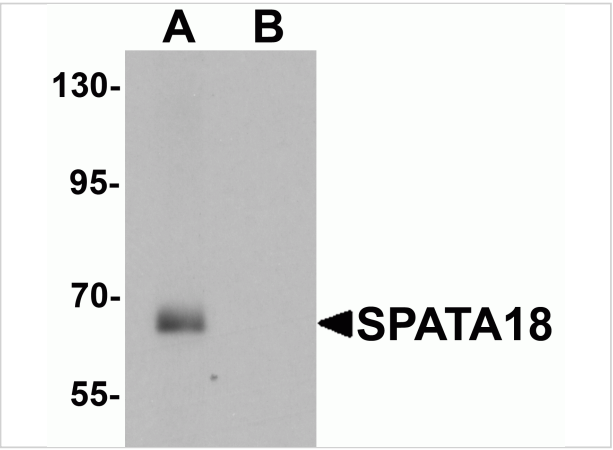
CATALOG NUMBER: 6615

### Specifications

Host Species	Chicken
Species Reactivity	Human, Mouse, Rat
Immunogen	SPATA18 antibody was raised against a 19 amino acid synthetic peptide near the amino terminus of human SPATA18. The immunogen is located within amino acids 90 - 140 of SPATA18.
Conjugate	Unconjugated
Tested Applications	ELISA, WB
User Note	Optimal dilutions for each application to be determined by the researcher.
Specificity	At least three isoforms of SPATA18 are known to exist; this antibody will detect the two longest isoforms. SPATA18 antibody is predicted to not cross-react with other SPATA family members.

### Properties

Purification	SPATA18 Antibody is affinity chromatography purified via peptide column.
Clonality	Polyclonal
Isotype	IgY
Physical State	Liquid
Buffer	SPATA18 Antibody is supplied in PBS containing 0.02% sodium azide.
Concentration	1 mg/mL
Storage Conditions	SPATA18 antibody can be stored at 4°C for three months and -20°C, stable for up to one year. As with all antibodies care should be taken to avoid repeated freeze thaw cycles. Antibodies should not be exposed to prolonged high temperatures.



SPATA18 Antibody 1

Western blot analysis of SPATA18 in rat lung tissue lysate with SPATA18 antibody at 1 µg/mL in (A) the absence and (B) the presence of blocking peptide

Disclaimer

Disclaimer	Optimal dilutions/concentrations should be determined by the end user. The information provided is a guideline for product use. This product is for research use only.
------------	--

For research use only. For additional information, visit ProSci's [Terms and Conditions Page](#).