

MS4A6A Antibody

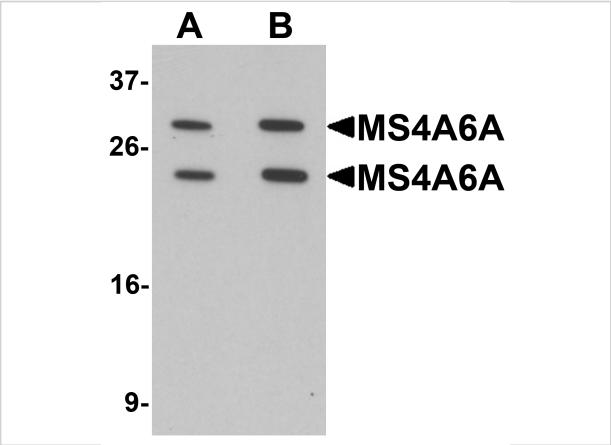
CATALOG NUMBER: 6593

Specifications

Host Species	Rabbit
Species Reactivity	Human, Rat
Immunogen	MS4A6A antibody was raised against a 19 amino acid synthetic peptide near the amino terminus of human MS4A6A. The immunogen is located within the first 50 amino acids of MS4A6A.
Conjugate	Unconjugated
Tested Applications	ELISA, IF, IHC-P, WB
User Note	Optimal dilutions for each application to be determined by the researcher.
Specificity	At least three isoforms of MS4A6A are known to exist; this antibody will detect the two longer isoforms. MS4A6A antibody is predicted to not cross-react with MS4A family members.

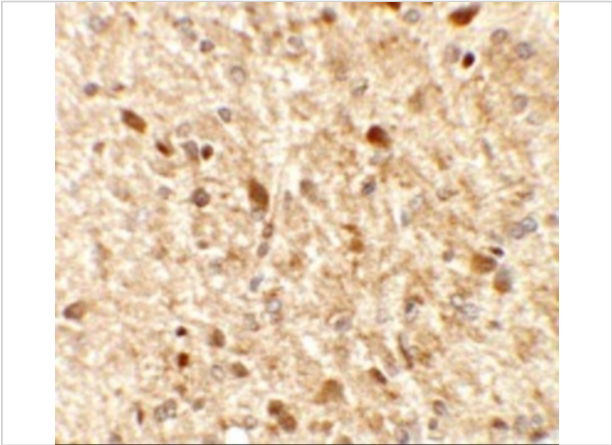
Properties

Purification	MS4A6A Antibody is affinity chromatography purified via peptide column.
Clonality	Polyclonal
Isotype	IgG
Physical State	Liquid
Buffer	MS4A6A Antibody is supplied in PBS containing 0.02% sodium azide.
Concentration	1 mg/mL
Storage Conditions	MS4A6A antibody can be stored at 4°C for three months and -20°C, stable for up to one year. As with all antibodies care should be taken to avoid repeated freeze thaw cycles. Antibodies should not be exposed to prolonged high temperatures.



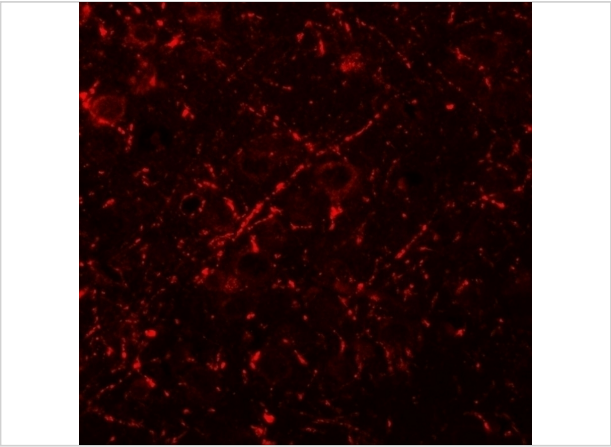
MS4A6A Antibody 1

Western blot analysis of MS4A6A in 293 cell lysate with MS4A6A antibody at (A) 1 and (B) 2 µg/mL.



MS4A6A Antibody 2

Immunohistochemistry of MS4A6A in rat brain tissue with MS4A6A antibody at 2.5 µg/mL.



MS4A6A Antibody 3

Immunofluorescence of MS4A6A in rat brain tissue with MS4A6A antibody at 20 µg/mL.

Disclaimer

Disclaimer	Optimal dilutions/concentrations should be determined by the end user. The information provided is a guideline for product use. This product is for research use only.
-------------------	--

For research use only. For additional information, visit ProSci's [Terms and Conditions Page](#).