

TLR3 Antibody

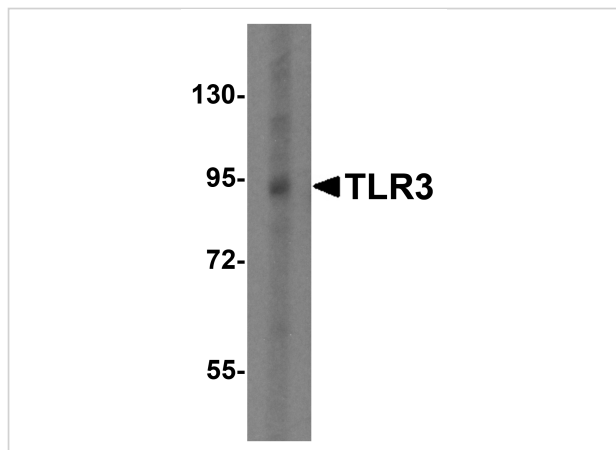
CATALOG NUMBER: 3645

Specifications

Host Species	Rabbit
Species Reactivity	Human, Mouse
Homology	Predicted species reactivity based on immunogen sequence: Bovine: (93%)
Immunogen	TLR3 antibody was raised against a peptide corresponding to 15 amino acids near the amino terminus of human TLR3. The immunogen is located within amino acids 40 - 90 of TLR3.
Conjugate	Unconjugated
Tested Applications	ELISA, ICC, IF, WB
User Note	Optimal dilutions for each application to be determined by the researcher.
Predicted Molecular Weight	Predicted: 88 kDa Observed: 91 kDa

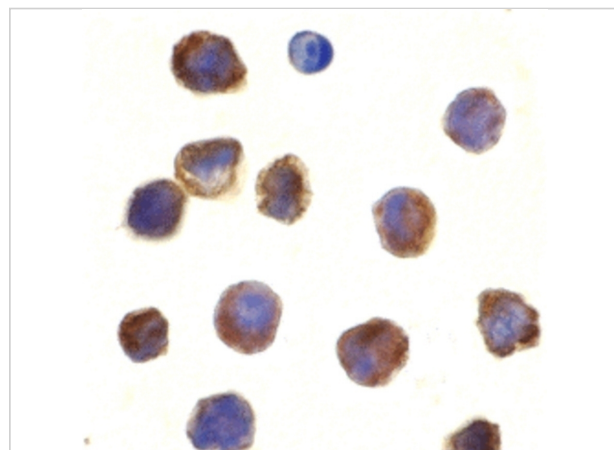
Properties

Purification	TLR3 Antibody is affinity chromatography purified via peptide column.
Clonality	Polyclonal
Isotype	IgG
Physical State	Liquid
Buffer	TLR3 Antibody is supplied in PBS containing 0.02% sodium azide.
Concentration	1 mg/mL
Storage Conditions	TLR3 antibody can be stored at 4°C for three months and -20°C, stable for up to one year. As with all antibodies care should be taken to avoid repeated freeze thaw cycles. Antibodies should not be exposed to prolonged high temperatures.



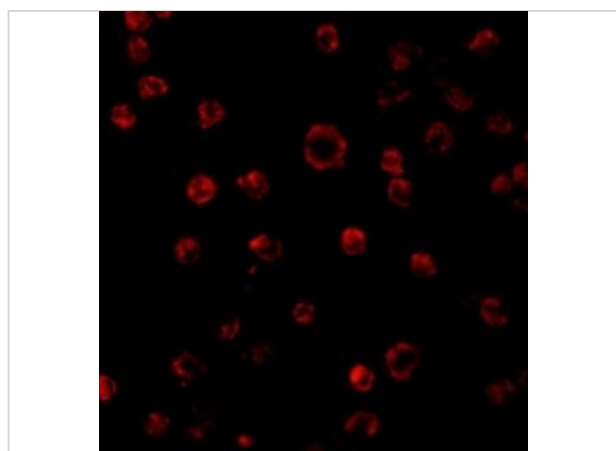
TLR3 Antibody 1

Western blot analysis of TLR3 in EL4 cell lysate with TLR3 antibody at 0.5 µg/mL.



TLR3 Antibody 2

Immunocytochemistry of TLR3 in K562 cells with TLR3 antibody at 10 µg/mL.



TLR3 Antibody 3

Immunofluorescence of TLR3 in K562 cells with TLR3 antibody at 2 µg/mL.

Disclaimer

Disclaimer

Optimal dilutions/concentrations should be determined by the end user. The information provided is a guideline for product use. This product is for research use only.

For research use only. For additional information, visit ProSci's [Terms and Conditions Page](#).