

PRICKLE4 Antibody

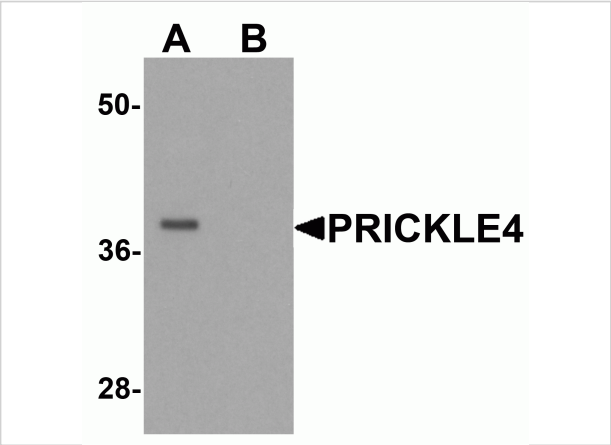
CATALOG NUMBER: 6567

Specifications

Host Species	Rabbit
Species Reactivity	Human
Immunogen	PRICKLE4 antibody was raised against an 18 amino acid synthetic peptide near the amino terminus of human PRICKLE4. The immunogen is located within the first 50 amino acids of PRICKLE4.
Conjugate	Unconjugated
Tested Applications	ELISA, ICC, IF, WB
User Note	Optimal dilutions for each application to be determined by the researcher.
Specificity	Two isoforms of PRICKLE4 are known to exist. PRICKLE4 antibody is predicted to not cross-react with other PRICKLE protein family members.

Properties

Purification	PRICKLE4 Antibody is affinity chromatography purified via peptide column.
Clonality	Polyclonal
Isotype	IgG
Physical State	Liquid
Buffer	PRICKLE4 Antibody is supplied in PBS containing 0.02% sodium azide.
Concentration	1 mg/mL
Storage Conditions	PRICKLE4 antibody can be stored at 4°C for three months and -20°C, stable for up to one year. As with all antibodies care should be taken to avoid repeated freeze thaw cycles. Antibodies should not be exposed to prolonged high temperatures.



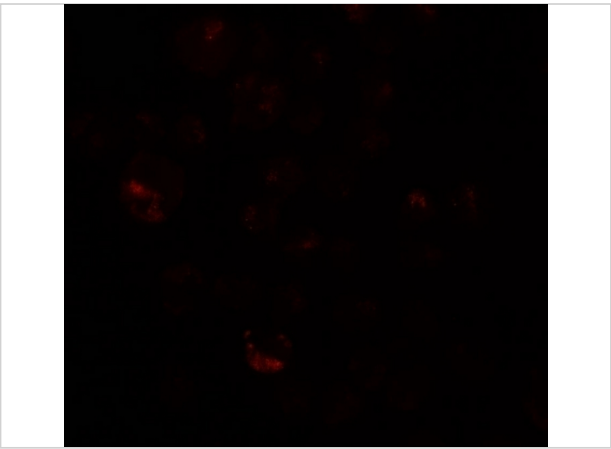
PRICKLE4 Antibody 1

Western blot analysis of PRICKLE4 in A549 cell lysate with PRICKLE4 antibody at 0.25 µg/ml in the (A) absence and (B) presence of blocking peptide.



PRICKLE4 Antibody 2

Immunocytochemistry of PRICKLE4 in A549 cells with PRICKLE4 antibody at 5 µg/mL.



PRICKLE4 Antibody 3

Immunofluorescence of PRICKLE4 in A549 cells with PRICKLE4 antibody at 20 µg/mL.

Disclaimer

Disclaimer	Optimal dilutions/concentrations should be determined by the end user. The information provided is a guideline for product use. This product is for research use only.
-------------------	--

For research use only. For additional information, visit ProSci's [Terms and Conditions Page](#).