

PRICKLE2 Antibody

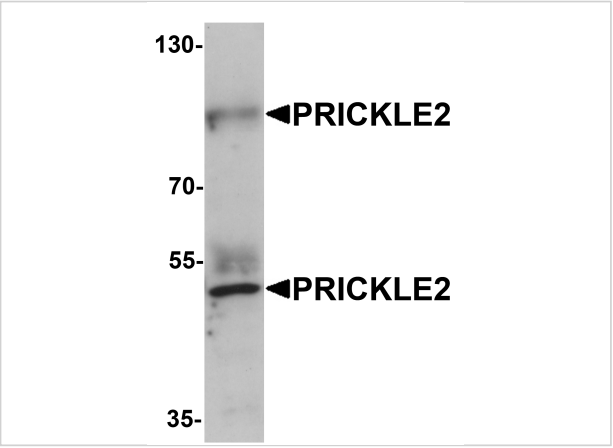
CATALOG NUMBER: 6563

Specifications

Host Species	Rabbit
Species Reactivity	Human, Mouse, Rat
Immunogen	PRICKLE2 antibody was raised against a 15 amino acid synthetic peptide near the center of human PRICKLE2. The immunogen is located within amino acids 420 - 470 of PRICKLE2.
Conjugate	Unconjugated
Tested Applications	ELISA, IF, WB
User Note	Optimal dilutions for each application to be determined by the researcher.
Specificity	Two isoforms of PRICKLE2 are known to exist. PRICKLE2 antibody is predicted to not cross-react with other PRICKLE protein family members.

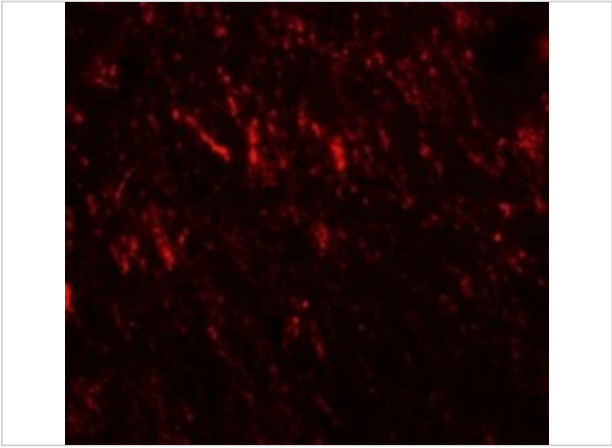
Properties

Purification	PRICKLE2 Antibody is affinity chromatography purified via peptide column.
Clonality	Polyclonal
Isotype	IgG
Physical State	Liquid
Buffer	PRICKLE2 Antibody is supplied in PBS containing 0.02% sodium azide.
Concentration	1 mg/mL
Storage Conditions	PRICKLE2 antibody can be stored at 4°C for three months and -20°C, stable for up to one year. As with all antibodies care should be taken to avoid repeated freeze thaw cycles. Antibodies should not be exposed to prolonged high temperatures.



PRICKLE2 Antibody 1

Western blot analysis of PRICKLE2 in A-20 lysate with PRICKLE2 antibody at 1 µg/mL.



PRICKLE2 Antibody 2

Immunofluorescence of PRICKLE2 in rat brain cells with PRICKLE2 antibody at 20 µg/mL.

Disclaimer

Disclaimer	Optimal dilutions/concentrations should be determined by the end user. The information provided is a guideline for product use. This product is for research use only.
-------------------	--

For research use only. For additional information, visit ProSci's [Terms and Conditions Page](#).