

TLR3 Antibody

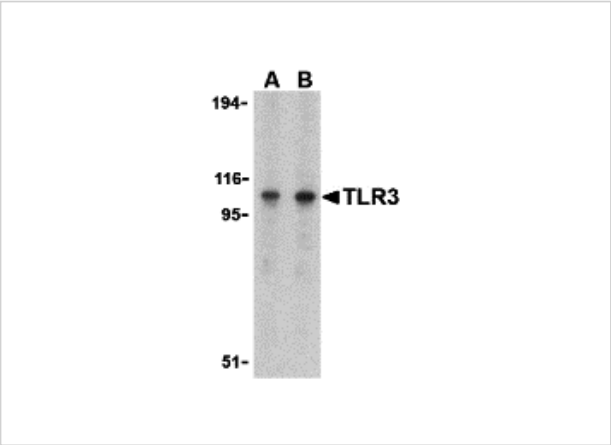
CATALOG NUMBER: 3643

Specifications

Host Species	Rabbit
Species Reactivity	Human, Mouse
Homology	Predicted species reactivity based on immunogen sequence: Bovine: (93%)
Immunogen	TLR3 antibody was raised against a peptide corresponding to 15 amino acids near the carboxy terminus of human TLR3. The immunogen is located within amino acids 780 - 830 of TLR3.
Conjugate	Unconjugated
Tested Applications	ELISA, ICC, IF, IHC-P, WB
User Note	Optimal dilutions for each application to be determined by the researcher.
Predicted Molecular Weight	Predicted: 99 kDa Observed: 105 kDa

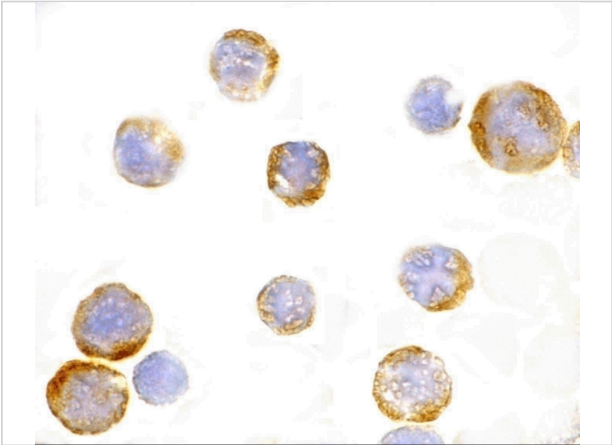
Properties

Purification	TLR3 Antibody is affinity chromatography purified via peptide column.
Clonality	Polyclonal
Isotype	IgG
Physical State	Liquid
Buffer	TLR3 Antibody is supplied in PBS containing 0.02% sodium azide.
Concentration	1 mg/mL
Storage Conditions	TLR3 antibody can be stored at 4°C up to one year. Antibodies should not be exposed to prolonged high temperatures.



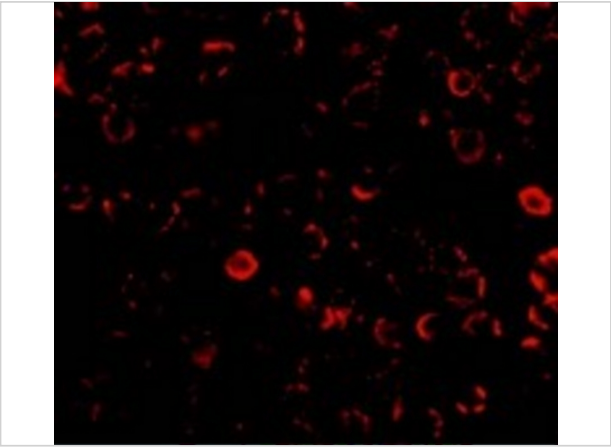
TLR3 Antibody 1

Western blot analysis of TLR3 in Daudi cell lysate with TLR3 antibody at (A) 1 and (B) 2 $\mu\text{g/mL}$.



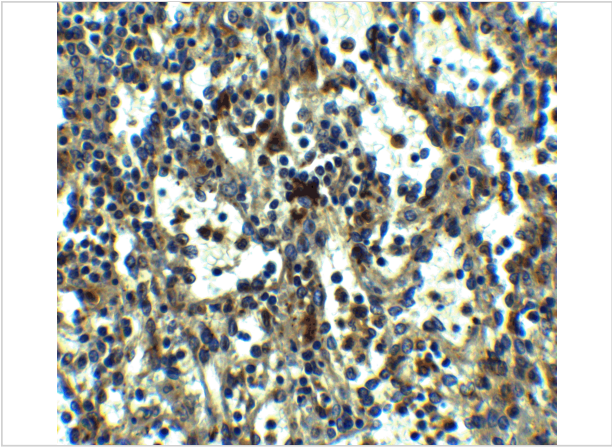
TLR3 Antibody 2

Immunocytochemistry of TLR3 in EL4 cells with TLR3 antibody at 1 $\mu\text{g/mL}$.



TLR3 Antibody 3

Immunofluorescence of TLR3 in EL4 cells with TLR3 antibody at 10 $\mu\text{g/mL}$.



TLR3 Antibody 4

Immunohistochemistry of TLR3 in human spleen tissue with TLR3 antibody at 5 $\mu\text{g/mL}$.

Disclaimer

Disclaimer	Optimal dilutions/concentrations should be determined by the end user. The information provided is a guideline for product use. This product is for research use only.
------------	--

For research use only. For additional information, visit ProSci's [Terms and Conditions Page](#).